

W. R. Barrineau and Associates  
ARCHITECTS AND LAND PLANNERS

100 BUNNY RUN LANE, SUITE 300 HORSESHOE BAY, TEXAS 78657  
PHONE ( 830 ) 398-6260

AUSTIN, TEXAS 78738

HILL COUNTRY INDOOR  
SPORTS & RECREATION

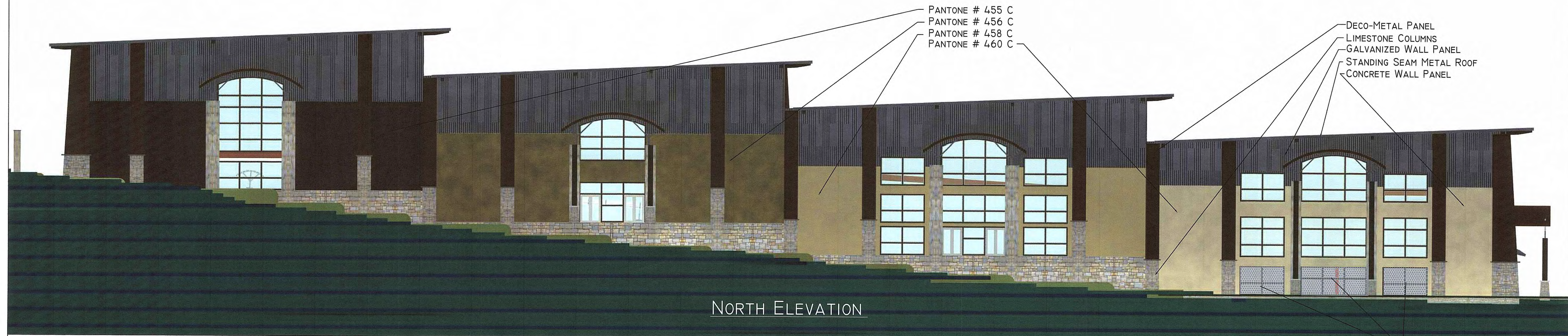
4317 SKAGGS DRIVE

PROJECT No.  
HCI-2015

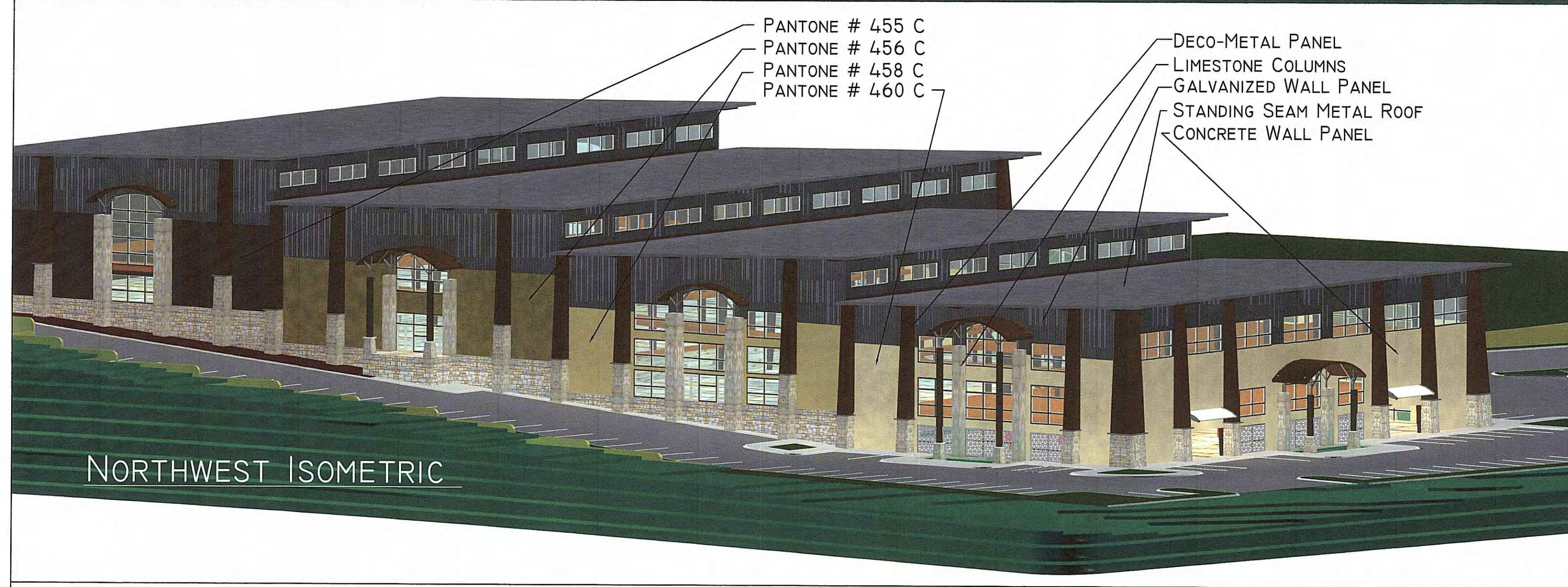
SHEET No.

SHEET 32 OF 41

SHEET TITLE  
EXTERIOR MATERIALS



NORTH ELEVATION



NORTHWEST ISOMETRIC



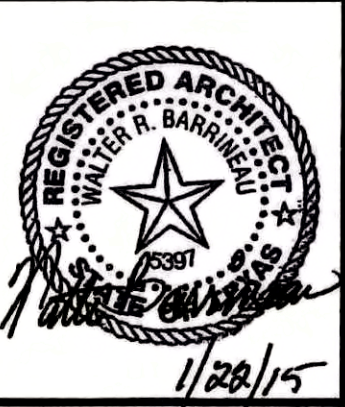
NORTHWEST ISOMETRIC



WEST ELEVATION







W. R. Barrineau and Associates  
ARCHITECTS AND LAND PLANNERS

100 BUNNY RUN LANE, SUITE 300 HORSESHOE BAY, TEXAS 78657  
PHONE ( 830 ) 598-6260

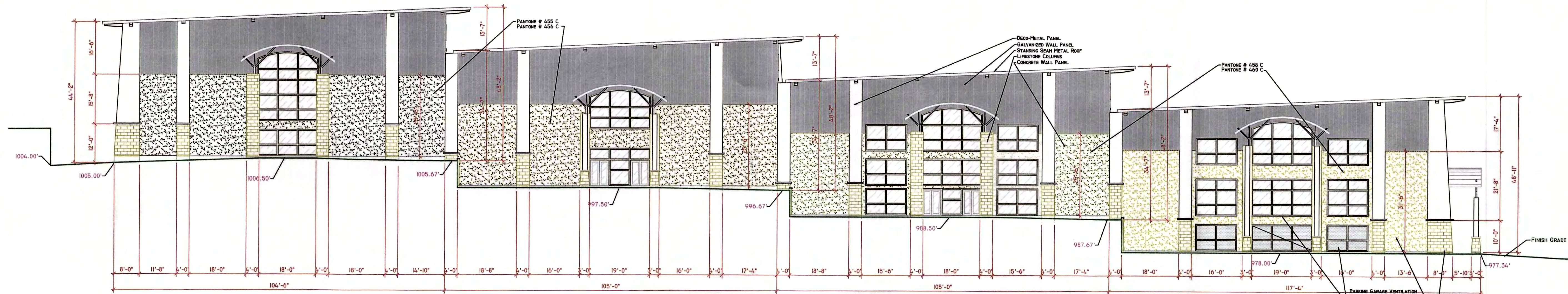
AUSTIN, TEXAS 78738

4317 SKAGGS DRIVE

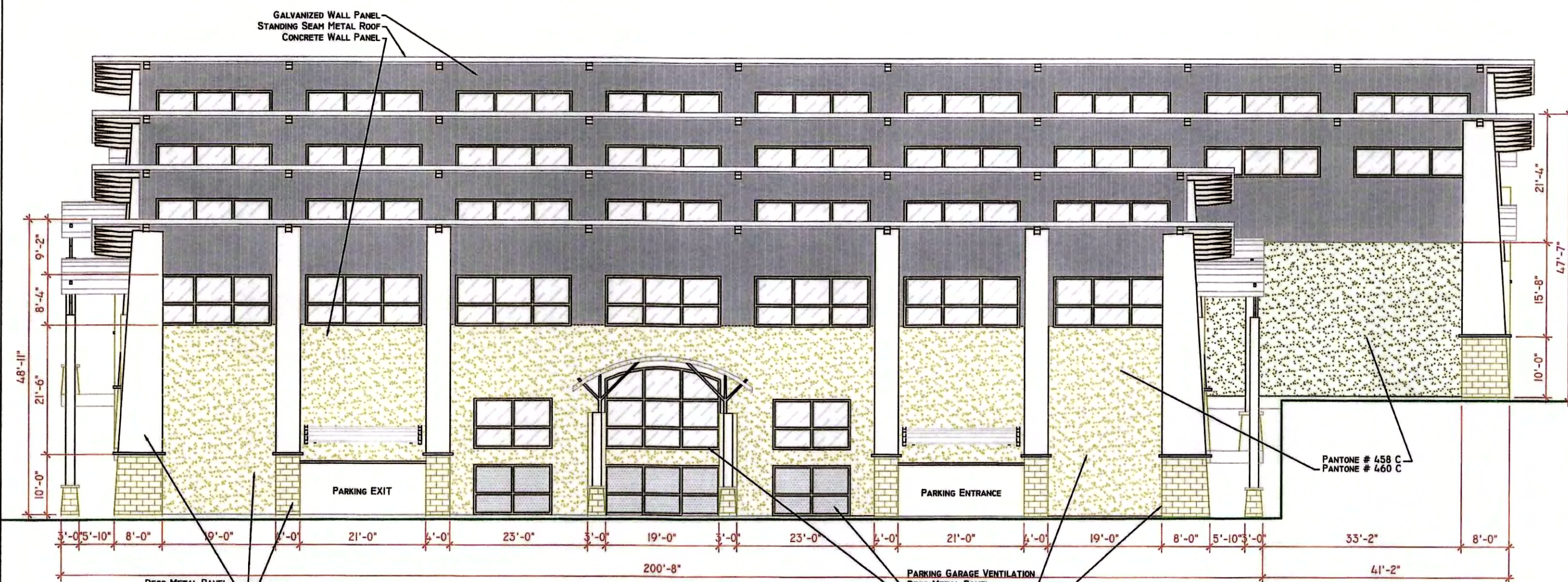
HILL COUNTRY INDOOR  
SPORTS & RECREATION

PROJECT No.  
HCI-2015  
SHEET No.  
BE02  
SHEET 33 OF 41  
SHEET TITLE  
EXTERIOR ELEVATIONS

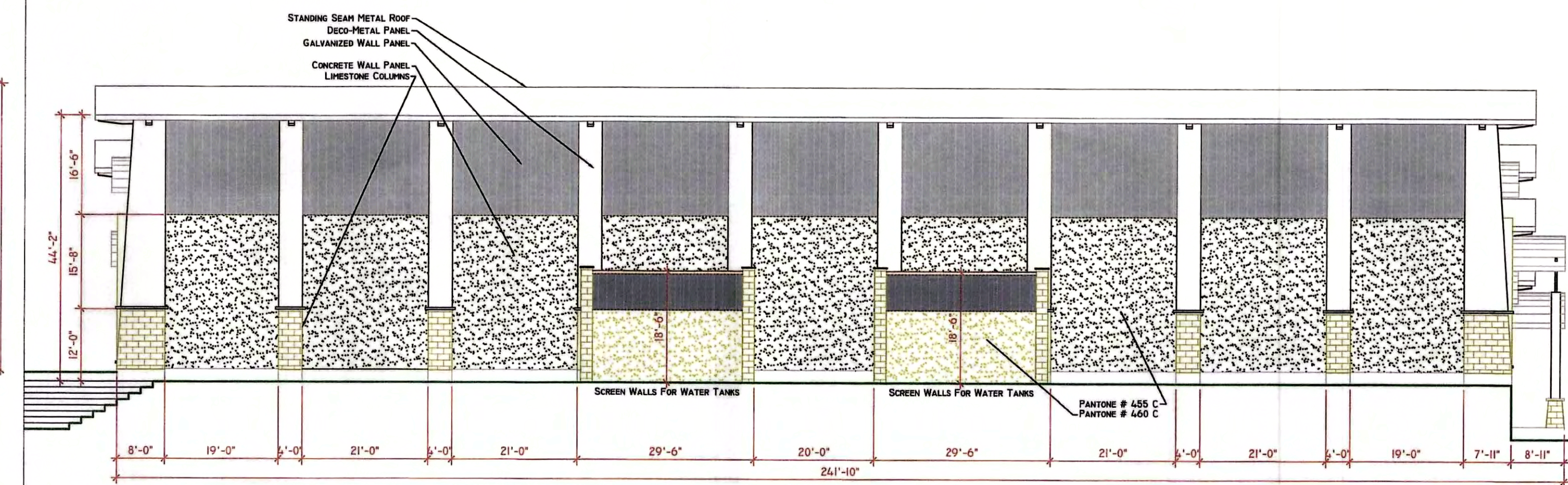
JANUARY 21, 2015  
REVISIONS



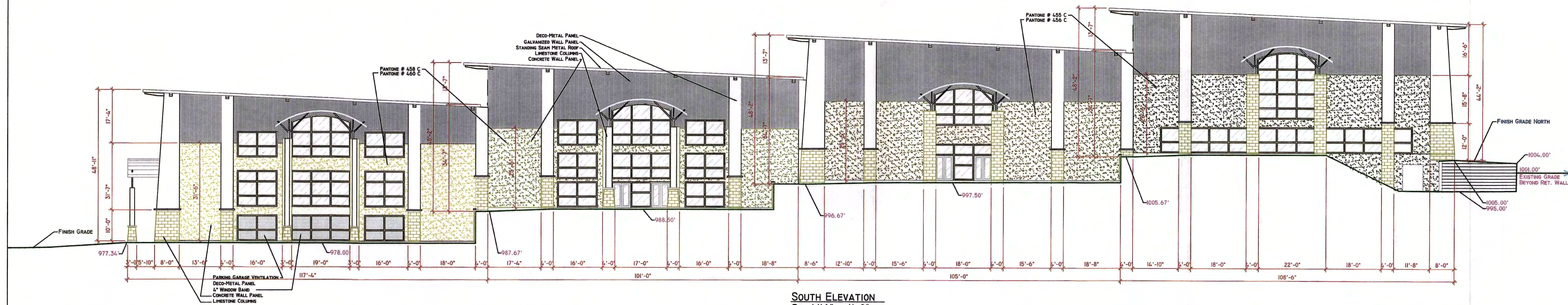
**NORTH ELEVATION**  
Sc: 1/16" = 1'-0"



**WEST ELEVATION**  
Sc: 1/16" = 1'-0"

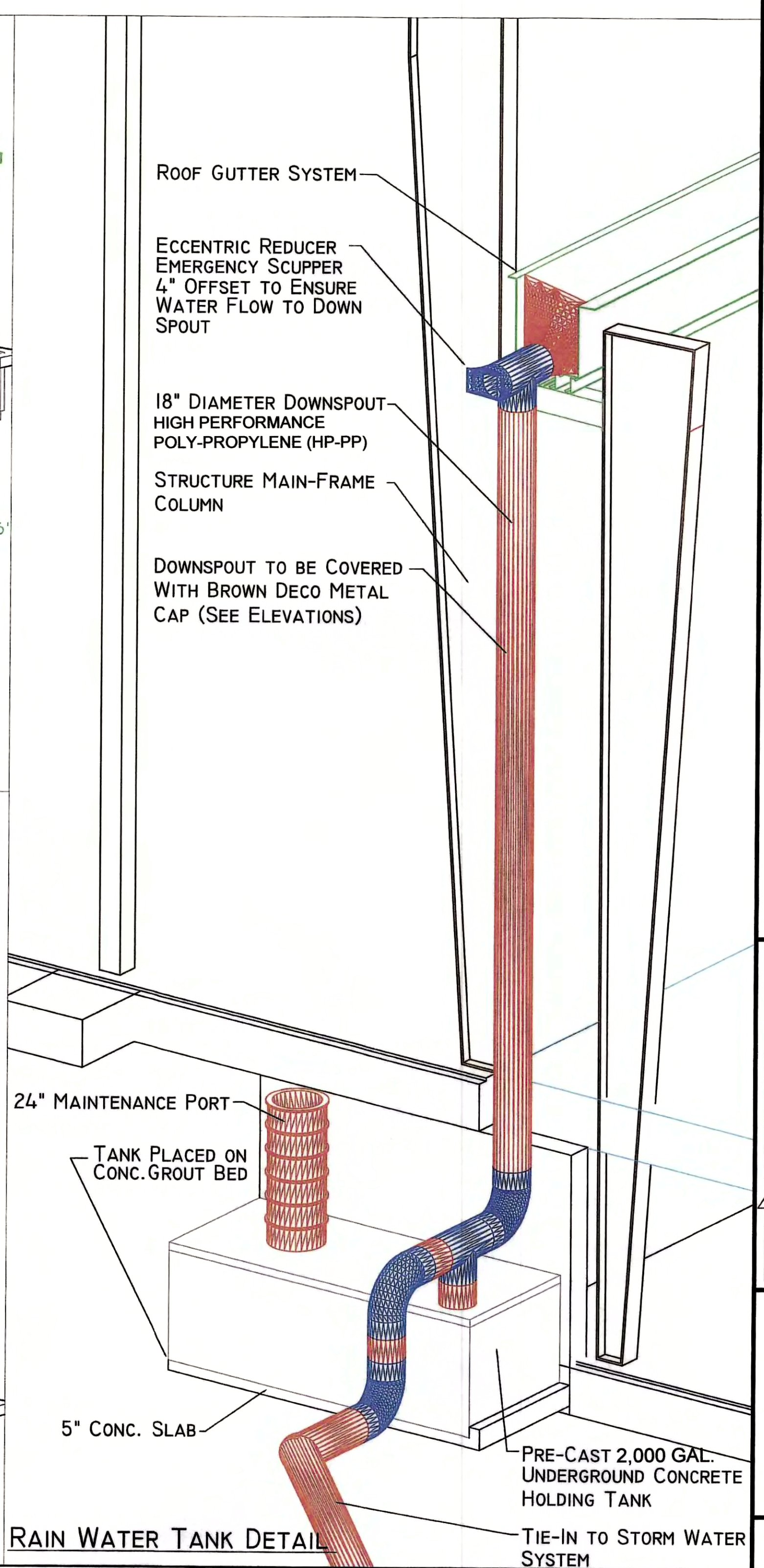
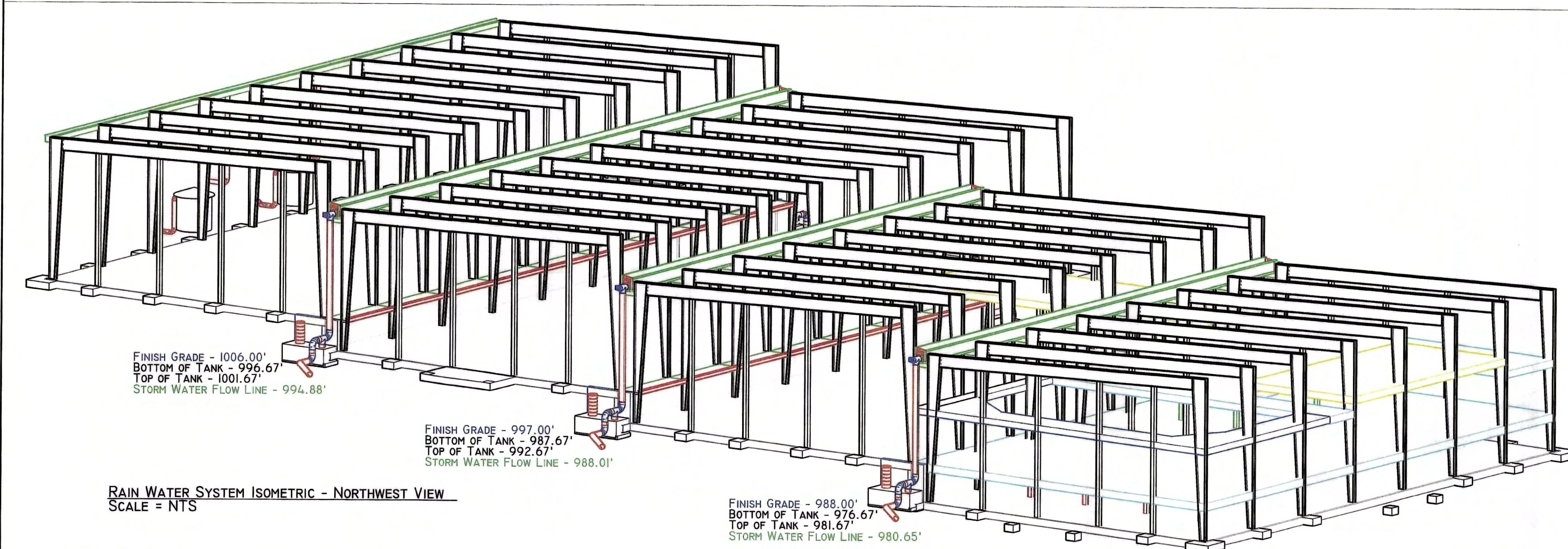
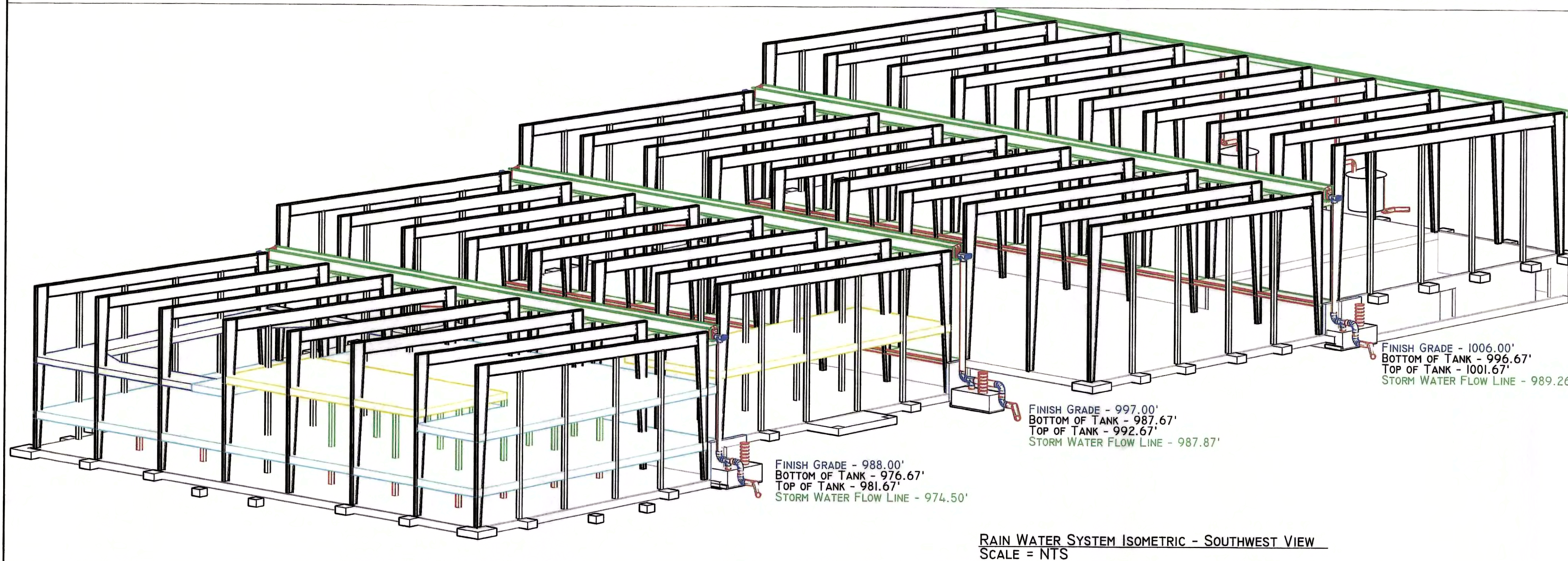
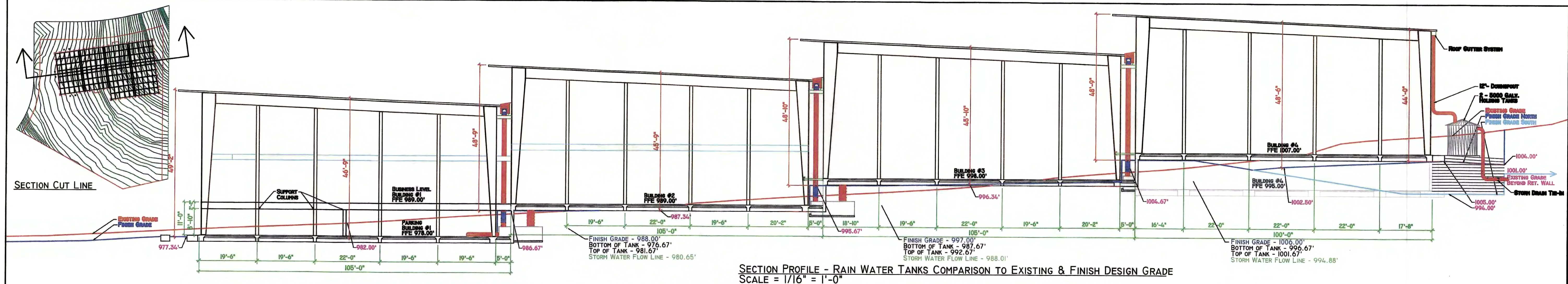



**EAST ELEVATION**  
Sc: 1/16" = 1'-0"



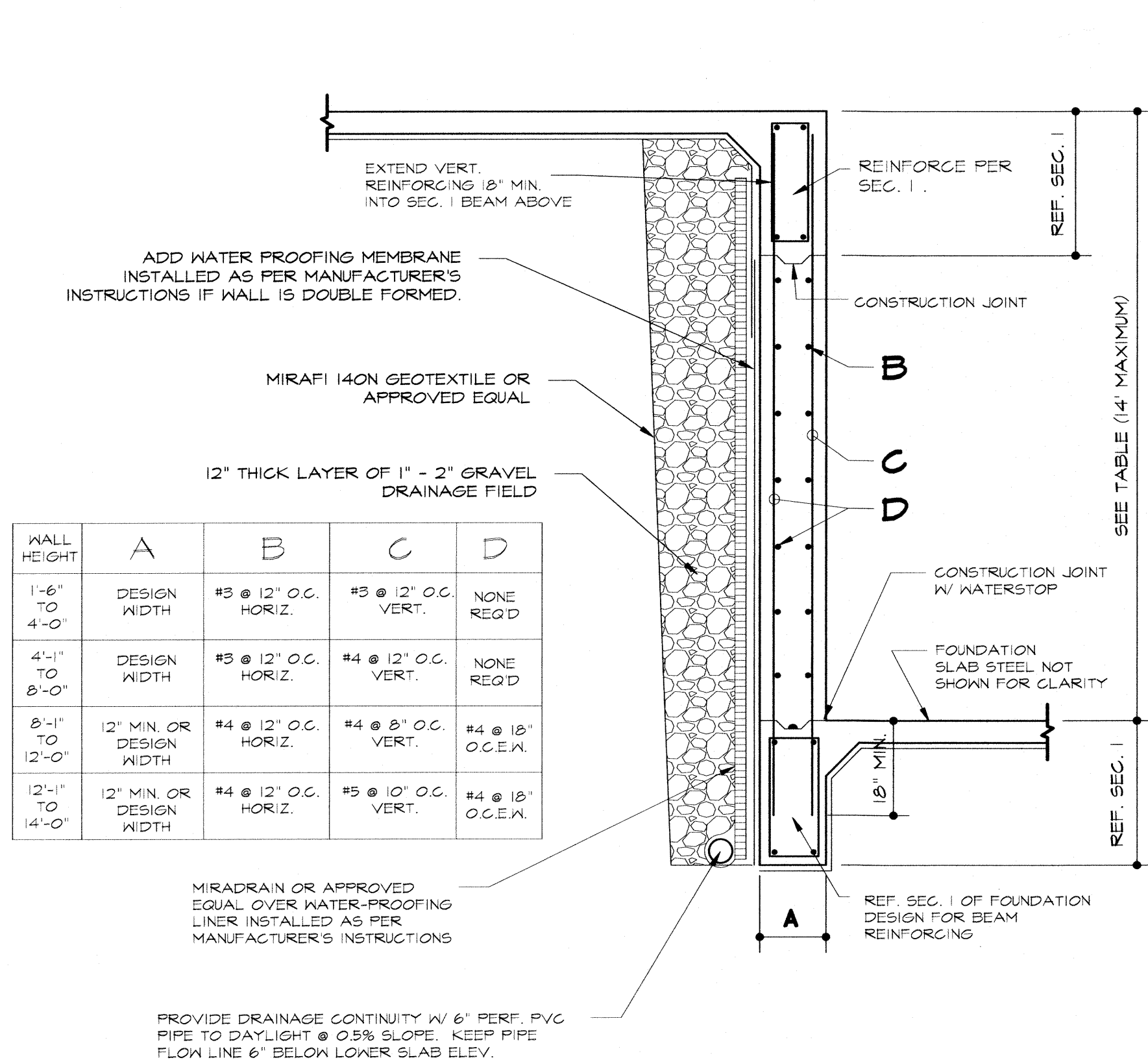
**SOUTH ELEVATION**  
Sc: 1/16" = 1'-0"





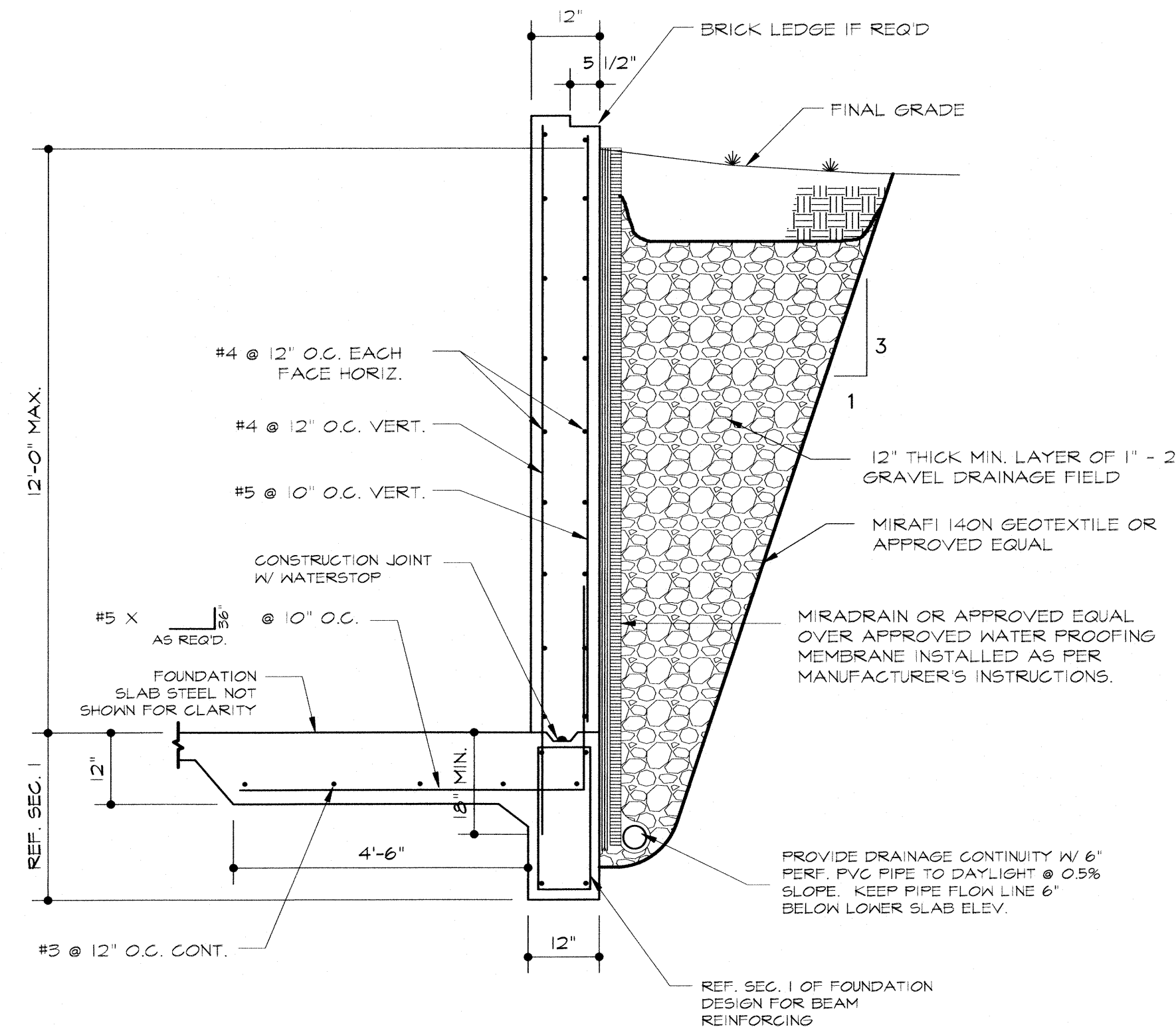
HILL COUNTRY INDOOR SPORTS & RECREATION										No.	By	Date	Correction/Revision
FOOTPRINT OVERVIEW & CROSS SECTION													
4317 SKAGGS DRIVE, BEE CAVE, TEXAS 78738													
CLIENT:				DRAWING ID:		DATE DRAWN:		JAN 22, 2015					
HCI & LDCM L.L.C.				D/V CHECKED BY:		HCI-ISO		SCALE: 1/16" = 1'					
<div><div>DAVID VENHUIZEN, P.E. PLANNING AND ENGINEERING AS IF WATER AND ENVIRONMENTAL VALUES MATTER 512/442-4047 5803 GATESHEAD DRIVE AUSTIN, TEXAS 78745 E-MAIL: <a href="mailto:dave@venhuizen-wm.com">dave@venhuizen-wm.com</a> WEBSITE: <a href="http://www.venhuizen-wm.com">www.venhuizen-wm.com</a></div><div>T.S.P.E. #F2231</div></div>													
<div><div></div></div>													
RAIN WATER SECTION & ISOMETRIC DETAIL													





DROP IN SLAB 19" TO 14'-0"

SCALE: N.T.S.



RETAINING WALL ON SLAB DETAIL

SCALE: N.T.S.

**NOTES:**

1. ALL OF THESE RETAINING WALL DESIGNS ARE TO BE DETERMINED BY BUILDER WHICH SYSTEM TO USE. EACH DETAIL IS DESIGNED FOR THE SITE CONDITIONS.

2. LOCATE RETAINING WALL/WALLS AS REQUIRED PER BUILDER AND/OR CIVIL ENGINEER.

3. THE CONTRACTOR IS RESPONSIBLE FOR OBTAINING ALL PERMITS NECESSARY TO LEGALLY COMMENCE WITH THIS WORK.

4. OBTAIN LOCATION AND DEPTH OF EXISTING UTILITY LINES PRIOR TO BEGINNING CONSTRUCTION.

5. CONTRACTOR SHALL DISPOSE OF ALL SPOILS LEGALLY AT AN OFFSITE LOCATION OR AS DIRECTED BY OWNER.

6. SHOULD CONDITIONS ARISE THAT ARE NOT COVERED BY DETAILS ON THIS PLAN, CONTACT ENGINEER AT ONCE FOR ADDITIONAL INSTRUCTIONS.

7. ENGINEER'S INSPECTION REQUIRED PRIOR TO POURING CONCRETE TO VERIFY PROPER PLACEMENT AND COVERAGE OF REINFORCING STEEL (AS PER DETAILS).

**CONCRETE:**

1. CONCRETE TO HAVE A MINIMUM 28 DAY COMPRESSIVE STRENGTH OF 3000 PSI.

2. CONCRETE SHALL BE WELL CONSOLIDATED USING PROPER MECHANICAL VIBRATION.

3. MINIMUM CONCRETE CLEAR COVER SHALL BE:

3/4" ADJACENT TO INTERIOR SLAB SURFACES

1 1/2" ABOVE SUB-GRADE

IN STIFFENING BEAMS, WALLS AND FOOTINGS:

1 1/2" ADJACENT TO EXTERIOR OR INTERIOR SURFACES

3" FROM SURFACES IN CONTACT WITH EARTH

AT PIPE PENETRATION IN BEAM OR SLAB:

2" FOR REBAR

**REINFORCEMENT:**

1. REINFORCING STEEL TO BE GRADE 60 FOR #4 AND LARGER AND GRADE 40 FOR #3.

2. ADD 24"x24" CORNER BARS EQUAL TO CONT. STEEL SIZE AT ALL DISCONTINUOUS HORIZ. CONT. STEEL.

3. "DRAIN GRAVEL" TO MEET ASTM C-33 SIZE NUMBER 57 OR 67.

4. ENGINEER'S INSPECTION REQUIRED FOR RETAINING WALLS GREATER THAN 4'-0" TALL (RETAINED) - SEE INSPECTION SCHEDULE.

**RETAINING WALL NOTES:**

1. REMAINING VOID SPACE BEHIND RETAINING WALL AND EXISTING CUT MAY BE FILLED WITH SITE SPOILS AND COMPACTED AS REQ'D. COMPACTION SHOULD BE A MINIMUM OF 95% ASTM D-698 OR GREATER IF REQUIRED BY SOILS REPORT.

2. AREAS CLOSE TO THE WALL WITHIN 6' MUST USE 1-MAN WALK BEHIND PLATE COMPACTOR.

3. BOTTOM OF FOOTINGS TO BEAR ON VIRGIN SOIL OR ROCK (LEVEL BASE).

4. ALL REINFORCING STEEL SIZE IS MINIMUM. CONTRACTOR MAY USE LARGER SIZE REBAR BUT MUST MAINTAIN SPACING AS SHOWN.

FOR ALL WATER STOPS USE:  
SYNKO FLEX 302 INSTALLED AS PER  
MANUFACTURER'S INSTRUCTIONS

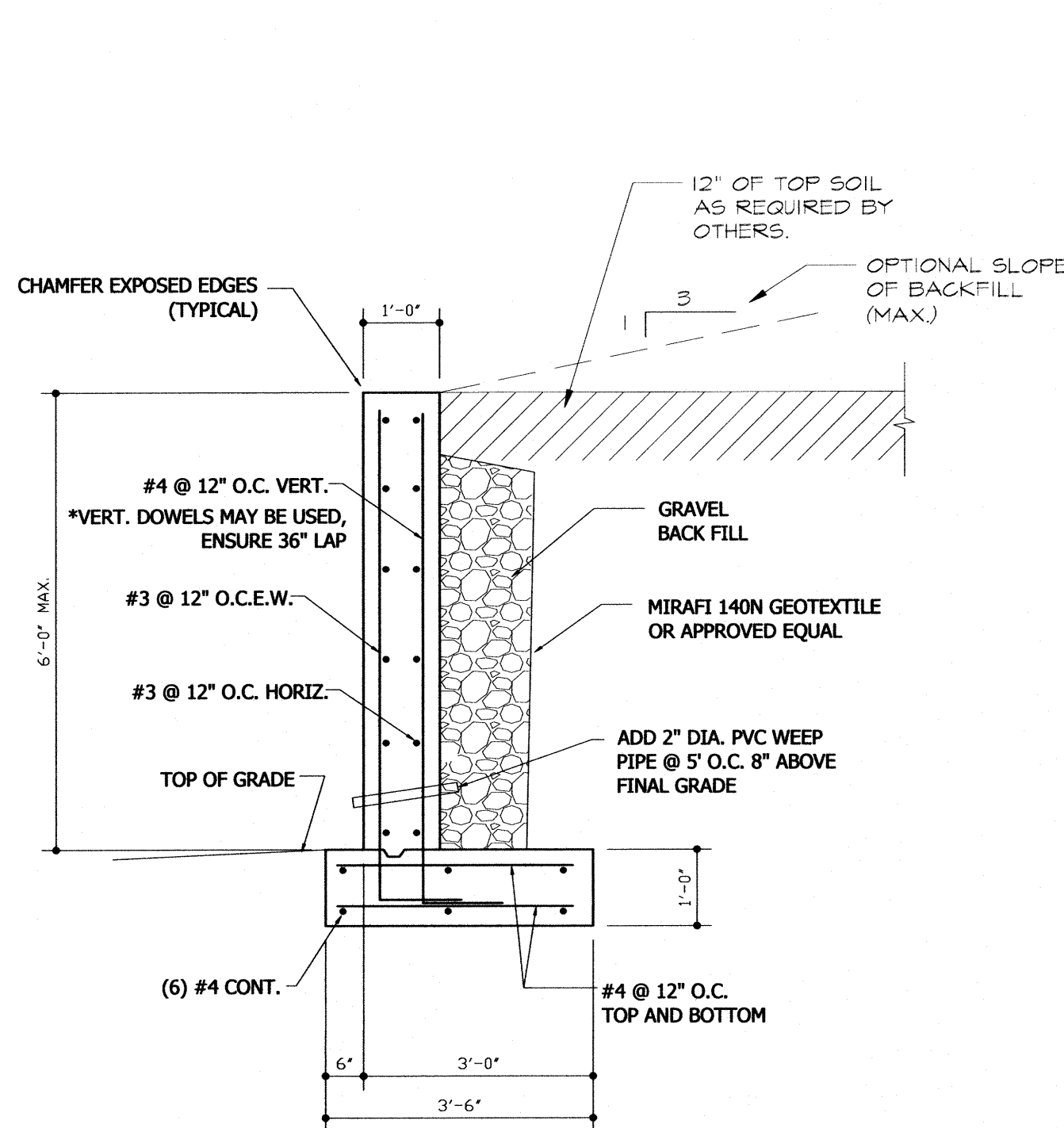
**THIS DESIGN EXCEEDS THESE MINIMUM SAFETY FACTOR CRITERIA:**

SAFETY FACTORS (S.F.)	MIN.	ACTUAL
1. SHEAR CAPACITY S.F.	1.5	1.718
FOOTING SHEAR = 2.1		
WALL SHEAR (BASE) = 3.2		
2. SLIDING S.F.	1.5	1.698
3. OVERTURNING S.F.	2.0 (SOIL)	3.551
4. BEARING PRESSURE S.F.	3.0	4.0

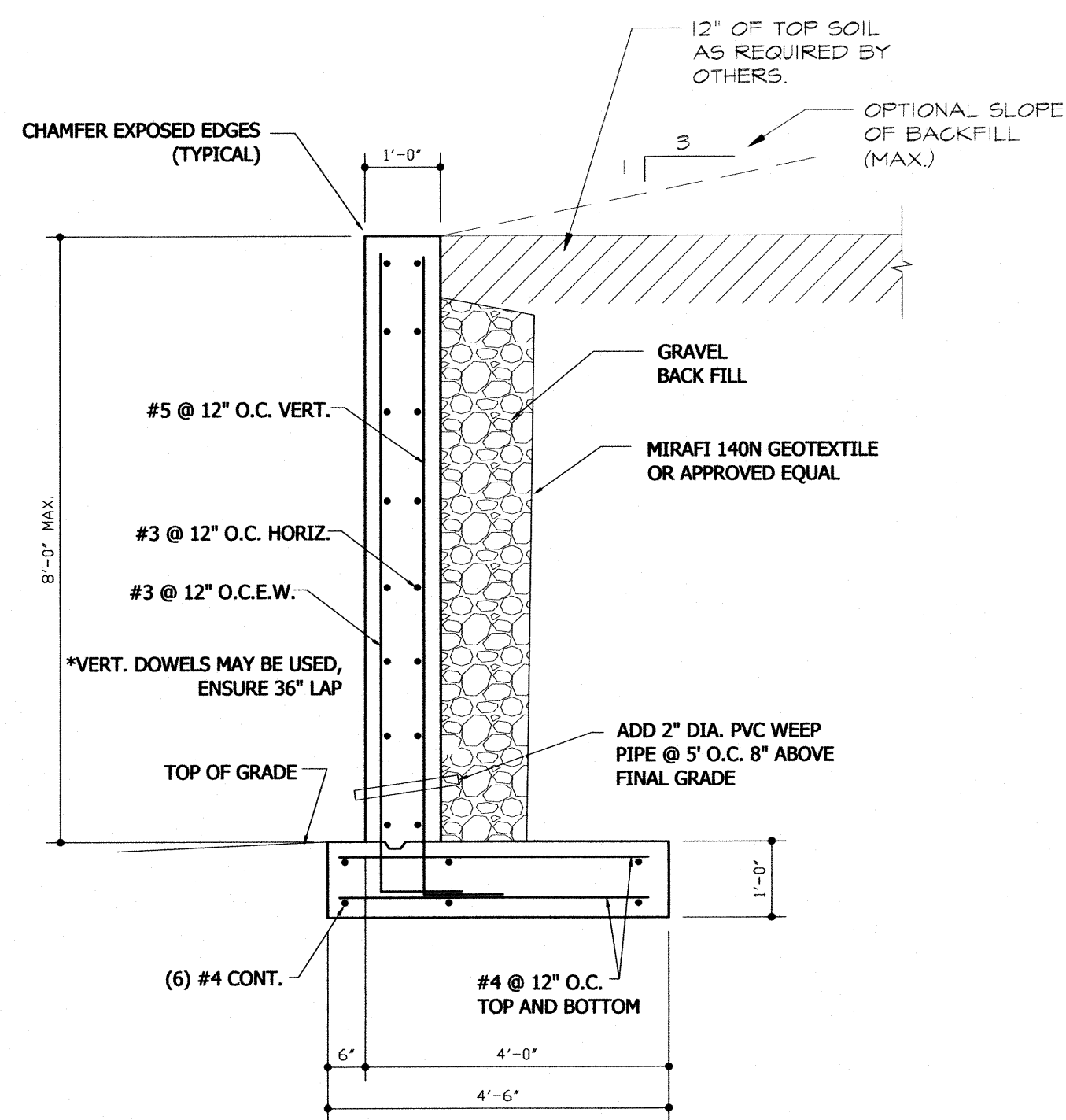
**DESIGN CRITERIA:**

**REQUIREMENTS OF IBC 2009**

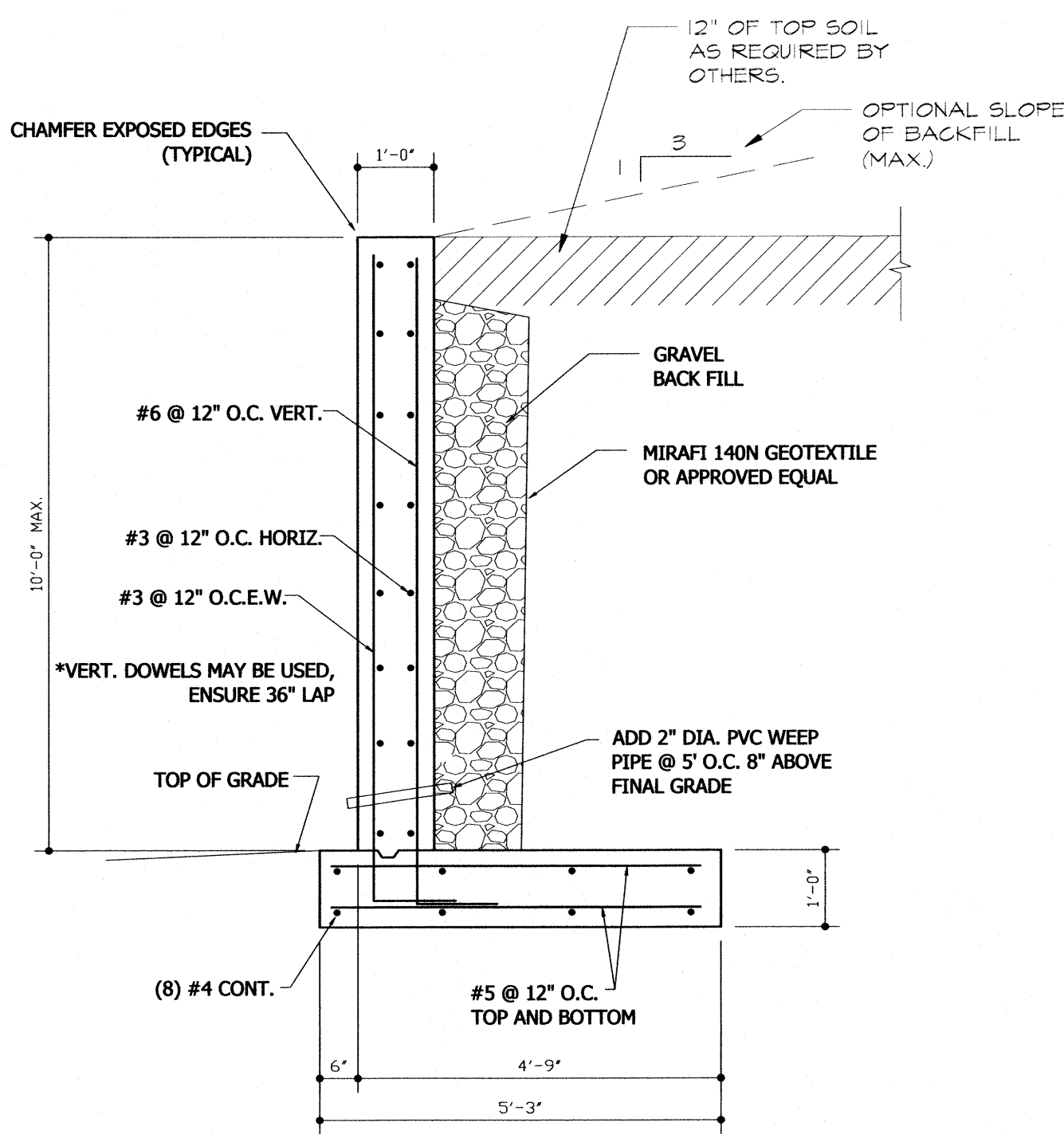
*ALLOWABLE SOIL BEARING	: 4,000 PSF
*LATERAL PRESSURE METHOD	: E.F.P.
*ACTIVE SOIL PRESSURE - HEEL	: 35 PSF
*ACTIVE SOIL PRESSURE - TOE	: 35 PSF
*PASSIVE PRESSURE	: 350 PSF
*SOIL WEIGHT	: 110 PSF



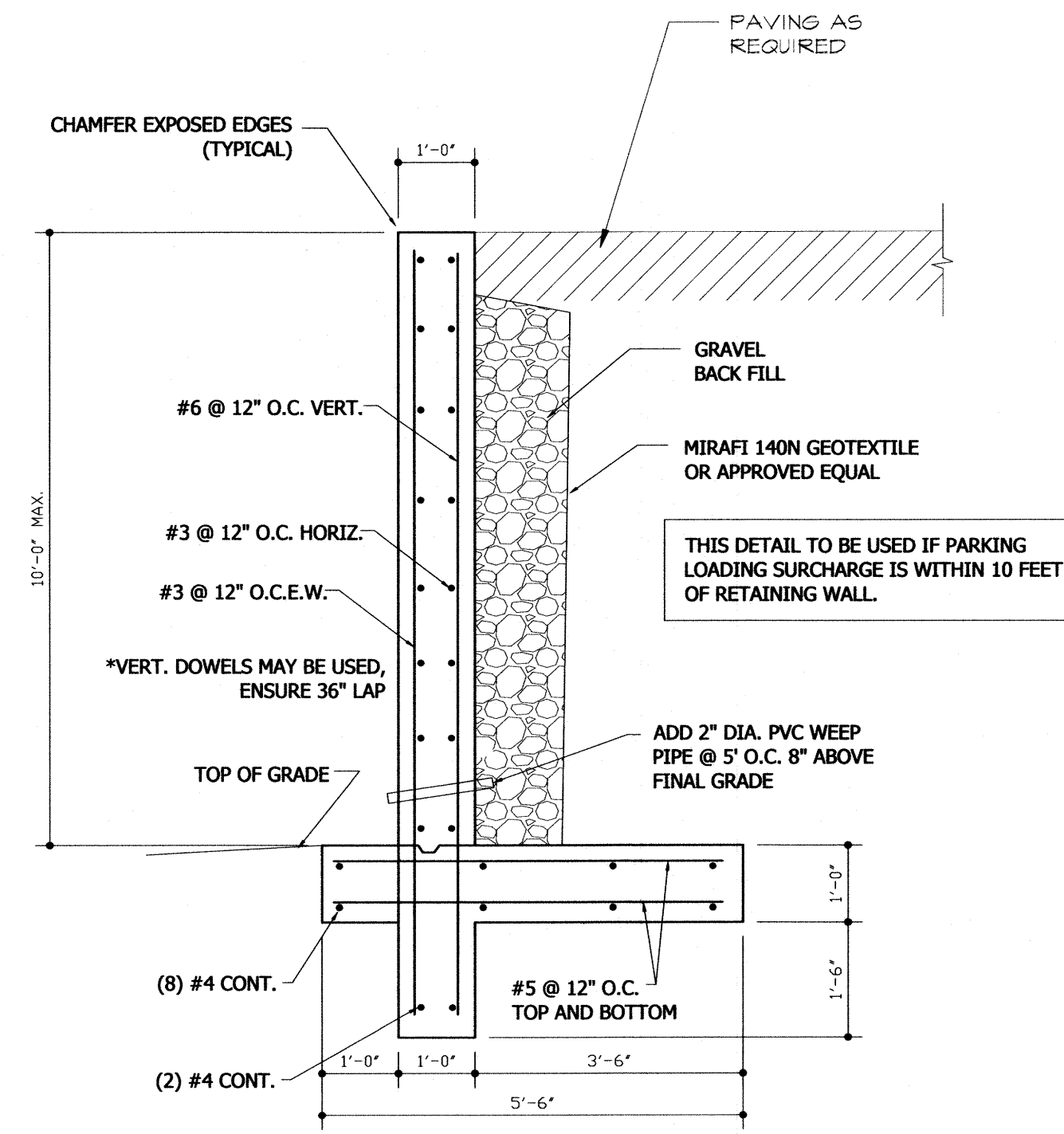
6'-0" MAX. RETAINING WALL



8'-0" MAX. RETAINING WALL







10'-0" MAX. RETAINING WALL



10'-0" MAX. RETAINING WALL  
WITH PARKING LOADING



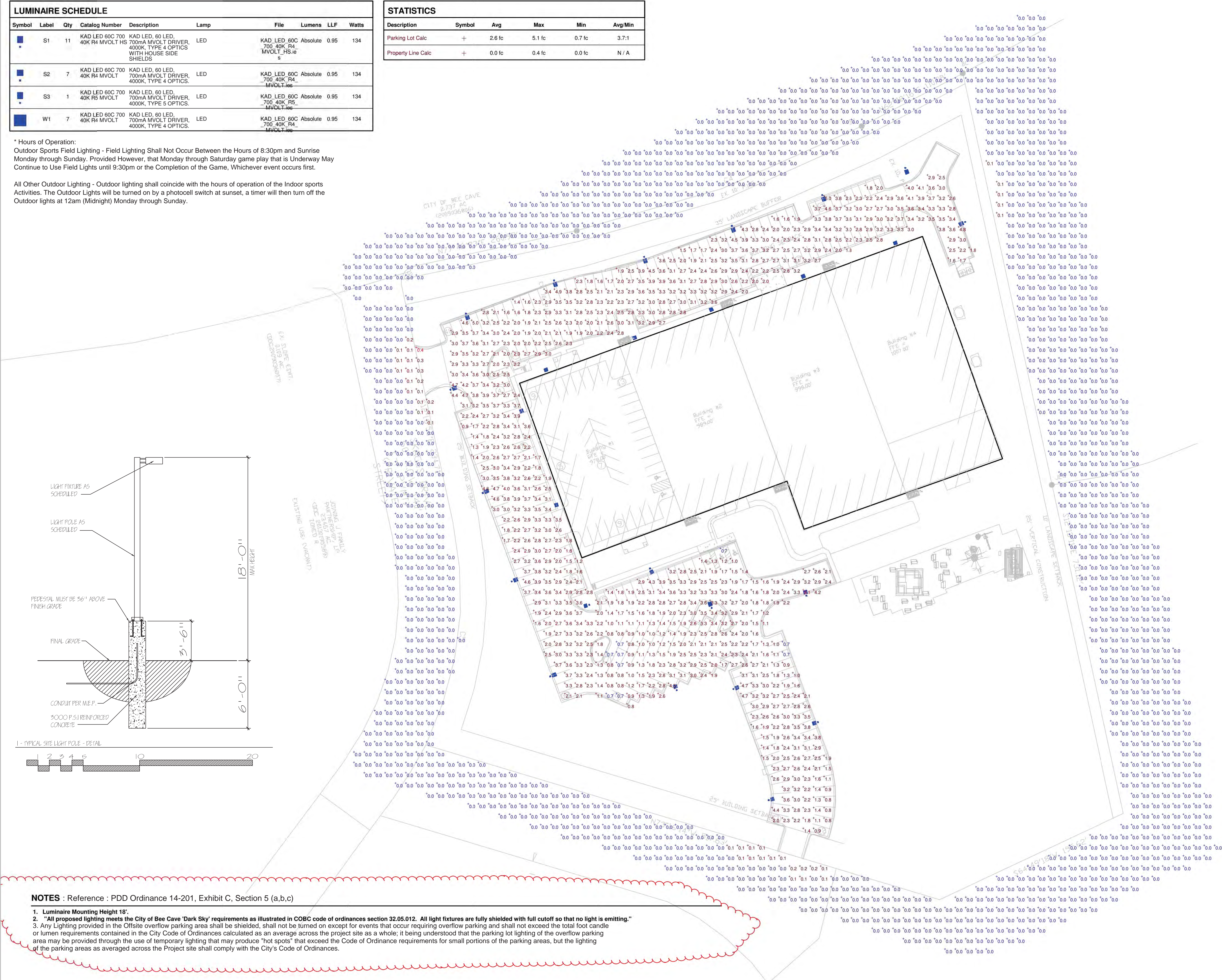
LUMINAIRE SCHEDULE									
Symbol	Label	Qty	Catalog Number	Description	Lamp	File	Lumens	LLF	Watts
	S1	11	KAD LED 60C 700 40K R4 MVOLT HS	KAD LED, 60 LED, 700mA MVOLT DRIVER, 4000K, TYPE 4 OPTICS WITH HOUSE SIDE SHIELDS	LED	KAD_LED_60C_700_40K_R4_MVOLT_HS.ies	Absolute	0.95	134
	S2	7	KAD LED 60C 700 40K R4 MVOLT	KAD LED, 60 LED, 700mA MVOLT DRIVER, 4000K, TYPE 4 OPTICS.	LED	KAD_LED_60C_700_40K_R4_MVOLT.ies	Absolute	0.95	134
	S3	1	KAD LED 60C 700 40K R5 MVOLT	KAD LED, 60 LED, 700mA MVOLT DRIVER, 4000K, TYPE 5 OPTICS.	LED	KAD_LED_60C_700_40K_R5_MVOLT.ies	Absolute	0.95	134
	W1	7	KAD LED 60C 700 40K R4 MVOLT	KAD LED, 60 LED, 700mA MVOLT DRIVER, 4000K, TYPE 4 OPTICS.	LED	KAD_LED_60C_700_40K_R4_MVOLT.ies	Absolute	0.95	134

\* Hours of Operation:

Outdoor Sports Field Lighting - Field Lighting Shall Not Occur Between the Hours of 8:30pm and Sunrise Monday through Sunday. Provided However, that Monday through Saturday game play that is Underway May Continue to Use Field Lights until 9:30pm or the Completion of the Game, Whichever event occurs first.

All Other Outdoor Lighting - Outdoor lighting shall coincide with the hours of operation of the Indoor sports Activities. The Outdoor Lights will be turned on by a photocell switch at sunset, a timer will then turn off the Outdoor lights at 12am (Midnight) Monday through Sunday.

STATISTICS					
Description	Symbol	Avg	Max	Min	Avg/Min
Parking Lot Calc	+	2.6 fc	5.1 fc	0.7 fc	3.7:1
Property Line Calc	+	0.0 fc	0.4 fc	0.0 fc	N / A



- NOTES :** Reference : PDD Ordinance 14-201, Exhibit C, Section 5 (a,b,c)
- Luminaire Mounting Height 18'.
  - "All proposed lighting meets the City of Bee Cave 'Dark Sky' requirements as illustrated in COBC code of ordinances section 32.05.012. All light fixtures are fully shielded with full cutoff so that no light is emitting."
  - Any Lighting provided in the Offsite overflow parking area shall be shielded, shall not be turned on except for events that occur requiring overflow parking and shall not exceed the total foot candle or lumen requirements contained in the City Code of Ordinances calculated as an average across the project site as a whole; it being understood that the parking lot lighting of the overflow parking area may be provided through the use of temporary lighting that may produce "hot spots" that exceed the Code of Ordinance requirements for small portions of the parking areas, but the lighting of the parking areas as averaged across the Project site shall comply with the City's Code of Ordinances.

Edward C. Monaco P.E.  
2115 Anchor Dr., Suite 3  
San Antonio, Texas 78213  
210-541-0200;  
edwardmonaco@satx.rr.com  
Firm #F8297



# Hill Country Indoor

Sports and Recreation

City of Bee Caves Site Lighting Submittal

Designer

Langley Design

Date

Jan 19, 2015

Scale

Drawing No.

SHEET 1 OF 5

LG01

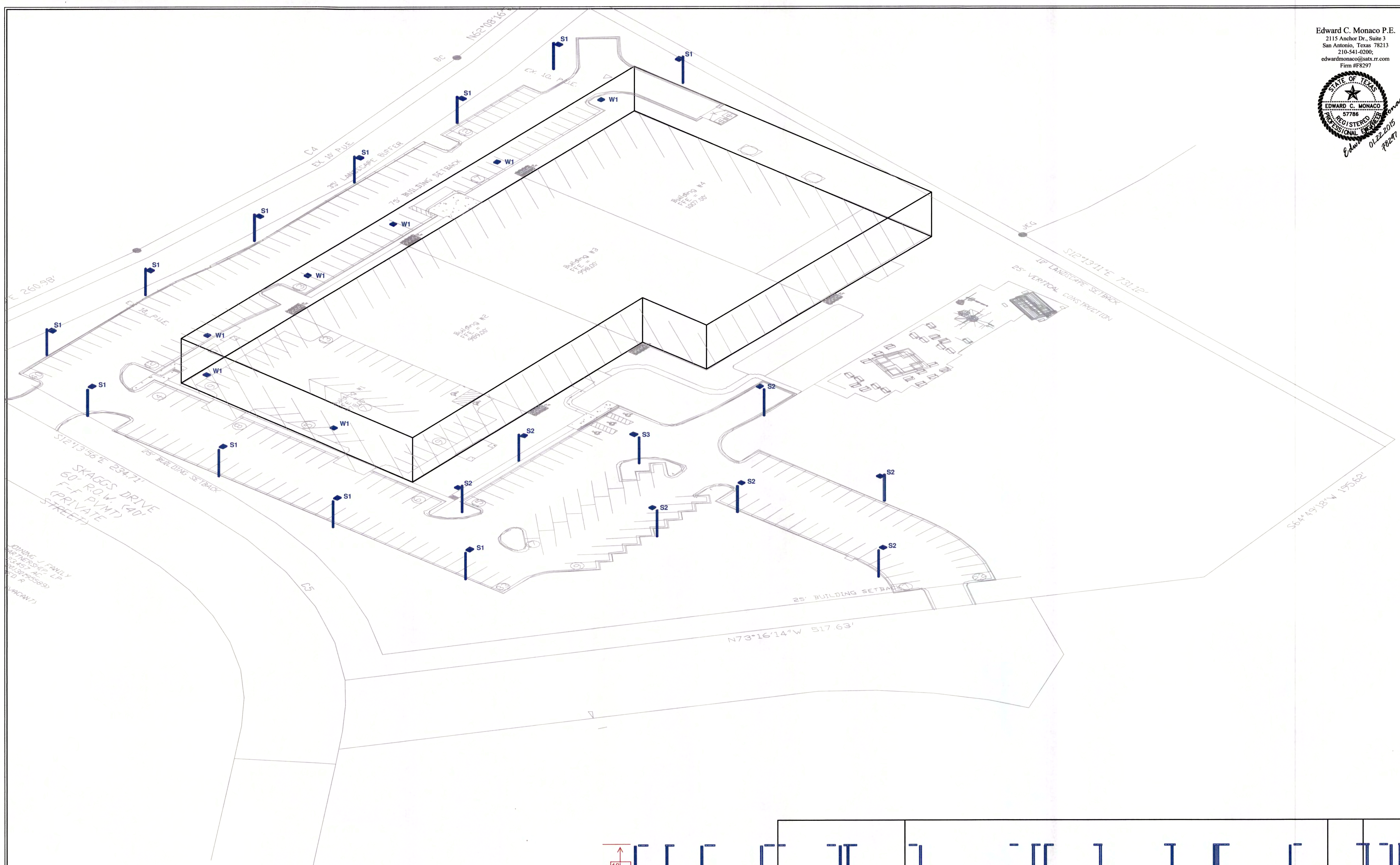
SHEET 37 OF 41



Edward C. Monaco P.E.  
2115 Anchor Dr., Suite 3  
San Antonio, Texas 78213  
210-541-0200;  
edwardmonaco@sats.txrr.com  
Firm #F8297



**Hill Country Indoor**  
Sports and Recreation  
City of Bee Caves Site Lighting Submittal




**Southwest View**  
Not to Scale



**South Elevation**  
Scale 1" = 20'

<b>Designer</b>	Langley
<b>Date</b>	Jan 19 2015
<b>Scale</b>	
<b>Drawing No.</b>	
SHEET 2 OF 5 LG02	
SHEET 38 OF 41	



LUMINAIRE SCHEDULE									
Symbol	Label	Qty	Catalog Number	Description	Lamp	File	Lumens	LLF	Watts
	A	4	Temporary 1000 Watt Metal Halide Floodlights	Temporary 1000 Watt Metal Halide Floodlights	ONE 1000-WATT CLEAR BT-56 METAL HALIDE, HORIZONTAL POSITION	TFA_1000M_T A.ies	107800	0.81	1080

STATISTICS						
Description	Symbol	Avg	Max	Min	Max/Min	Avg/Min
Calc Zone #1	+	4.2 fc	40.6 fc	0.3 fc	135.3:1	14.0:1

NOTES

1. Luminaire Mounting Height not to exceed 18'.



**DOOSAN**

**LSC | Portable Light Tower**

**Portable Power**

**LSC - Redesigned with you in mind!**

While retaining our same class-leading reliability, we have enhanced our Doosan Portable Power LSC light tower features to include a Kubota engine matched with a high output 6kW alternator. We have improved our compact light tower by reducing the footprint and increasing the runtime and ease of maintenance and operation. Regardless of your illumination needs, the optimal light tower choice is the Doosan LSC.

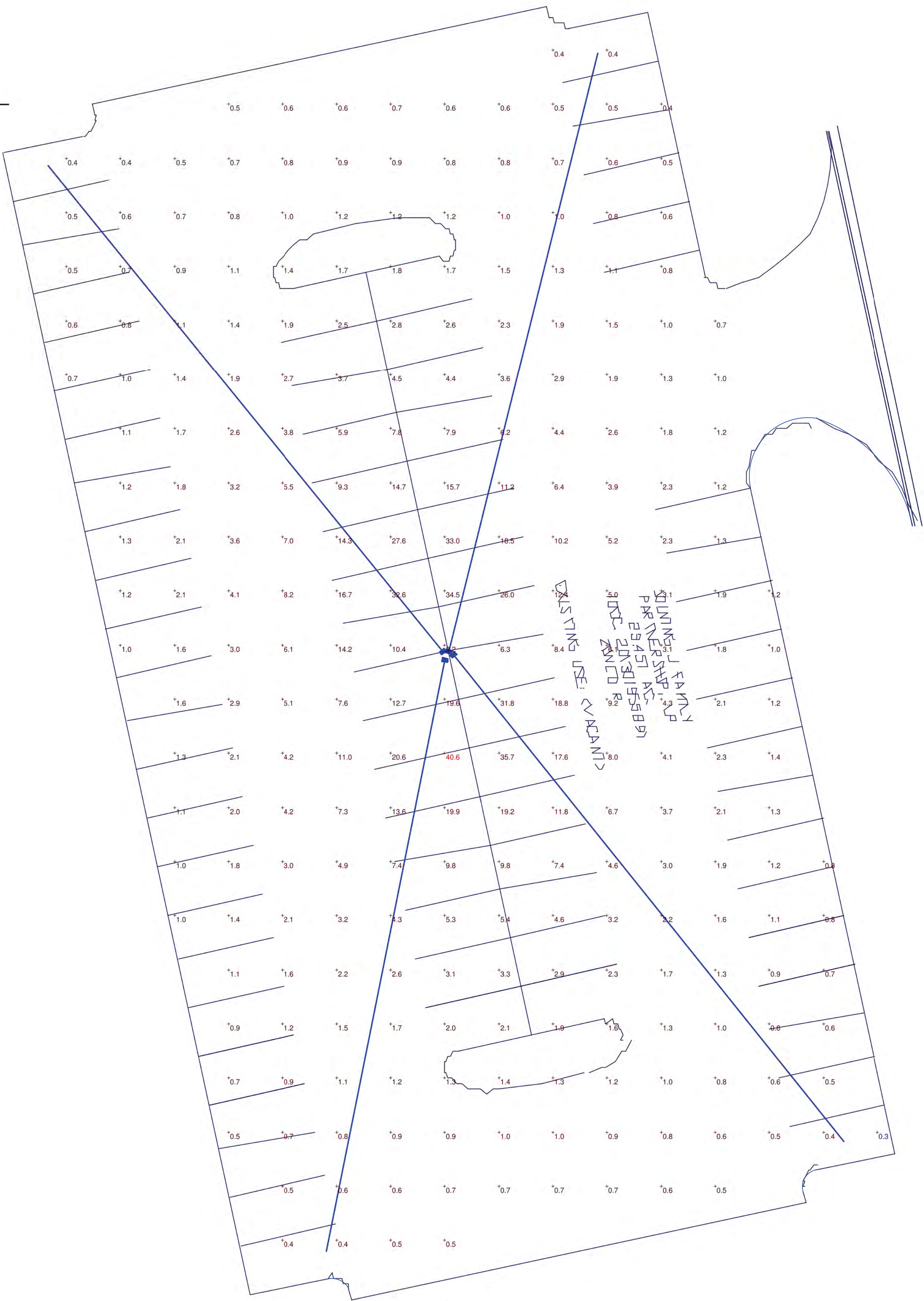
Model	LSC 60 Hz	LSC 50 Hz	Features
<b>ENGINE</b>			
Make	Kubota D1005BG		Mecct. Alte 6kW alternator
Emissions Tier Level	Tier 4 Final (T4F)		• Able to withstand 65-mph (104.6 km/h) winds with 4-point outrigger and jack system fully deployed
Number of Cylinders/Displacement - cu. in. (L)	3/61.1 (1,005)		• Fully galvanized, telescoping, rotating steel tower extends to 30 ft (9 m) and features a protective sleeve for the curly cord
Power @ Rated Speed - bhp (kW) @ 1800 rpm	13.9 (11.3)		• Four 1,000-watt metal halide lamps
Cooling System	Water		• Automatic shutdown protection for high engine coolant temperature and low engine oil pressure
DC System Voltage/Battery Capacity	12 V/500CCA		Industry-leading factory warranty providing 2-year/2,000-hour bumper-to-bumper coverage
Fuel Type/Usable Fuel Capacity - gal (L)	Diesel/28 (105)		
Runtime with 4 Lights - hrs	55	64	
<b>GENERATOR</b>			
Prime Power Rating, 60 Hz, L10 PF	6 kW		
Available Voltages - Single Phase	120	230	
<b>RECEPTACLES &amp; LIGHTS</b>			
120 V GFCI Duplex (NEMA 5-20R)	(1) 15 amp		
230V EC 30R	(1) 16 amp		
230V EC 125-14	(1) 10 amp		
Number of Lights	4 x 1000		
Type of Lights	Metal Halide		
<b>CONTROL PANEL</b>			
Length with Drawbar - in (mm)	167.5 (4255)		
Width with Enders - in (mm)	49.0 (1245)		
Track Width - in (mm)	42 (1067)		
Height in Towel Position - in (mm)	65.4 (1676)		
Max Tower Height - ft (m)	30 (9)		
Shipping Weight - lb (kg)	1613 (644.9)	1423 (645.5)	
Operating Weight - lb (kg)	1569 (711.7)	1578 (715.4)	



**12 on a Truck**  
12 units per 48' flatbed allows truckload maximization and cost-effective transportation.



DoosanPortablePower.com  
Doosan Infracore Portable Power  
3293 Glenway Drive  
Statesville, NC 28625



Plan View  
Scale 1" = 12'

\* Reference : PDD Ordinance 14-201, Exhibit C, Section 5 (b)

1. Any Lighting provided in the Offsite overflow parking area shall be shielded, shall not be turned on except for events that occur requiring overflow parking and shall not exceed the total foot candle or lumen requirements contained in the City Code of Ordinances calculated as an average across the project site as a whole; it being understood that the parking lot lighting of the overflow parking area may be provided through the use of temporary lighting that may produce "hot spots" that exceed the Code of Ordinance requirements for small portions of the parking areas, but the lighting of the parking areas as averaged across the Project site shall comply with the City's Code of Ordinances.



Hill Country Indoor Sports  
Temporary Parking  
Lighting Calcs

Designer

Langley

Date

Feb 23 2015

Scale

Drawing No.

SHEET 5 OF 5  
LG05

Temporary  
Overflow Parking  
Layout

Edward C. Monaco P.E.  
2115 Anchor Dr., Suite 3  
San Antonio, Texas 78213  
210-541-0200;  
edwardmonaco@satsr.com  
Firm #F8297

