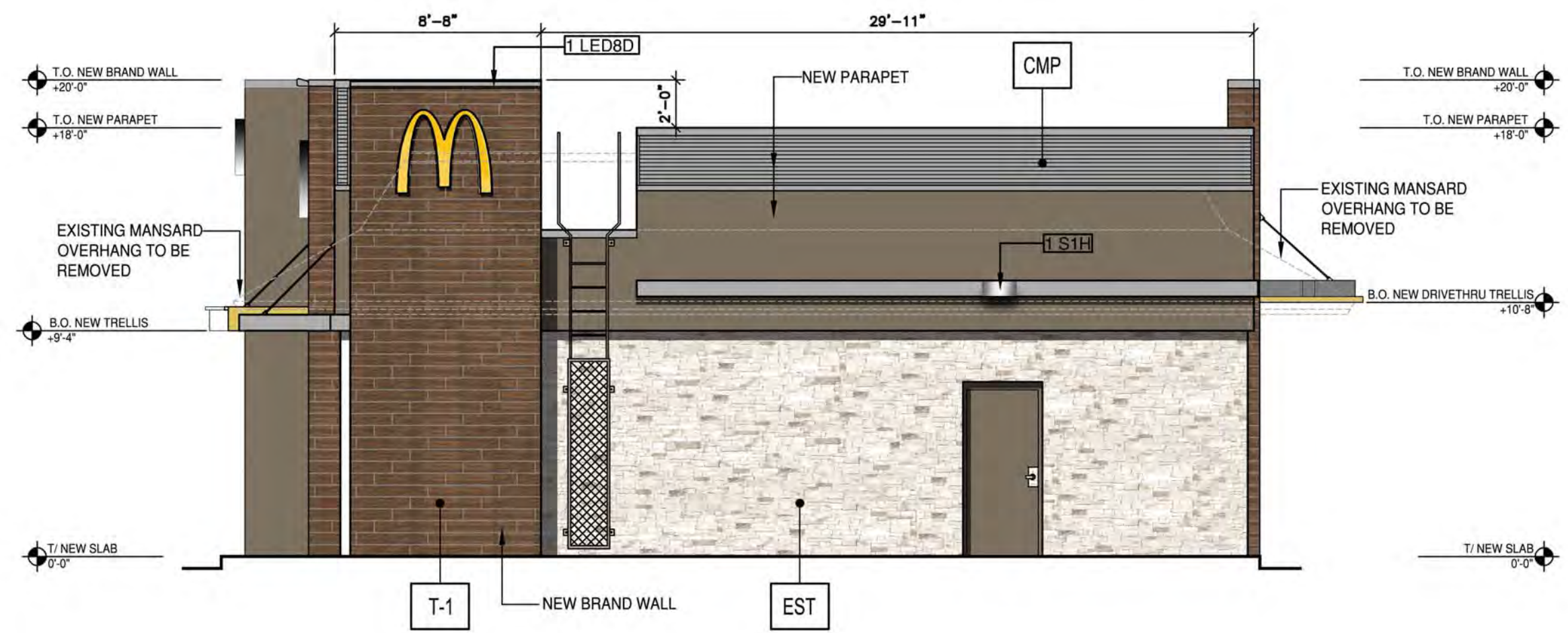


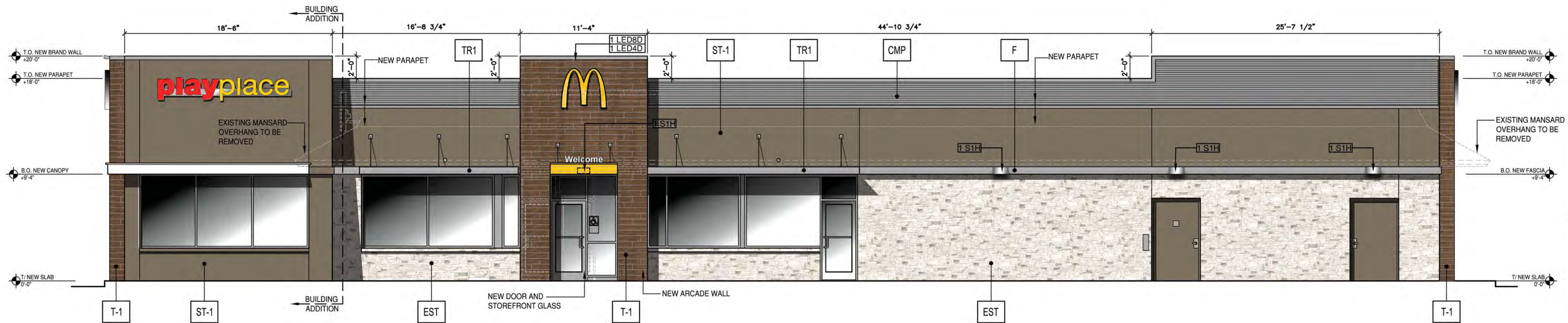
NOTE:
A SEPARATE SIGNAGE, BUILDING,
AND FLATWORK PERMIT WILL BE
REQUIRED FROM THE CITY OF
BEECAVE BEFORE REMODELING
CONSTRUCTION CAN BEGIN



SOUTH-SOUTHWEST FRONT ELEVATION



NORTH-NORTHEAST REAR ELEVATION



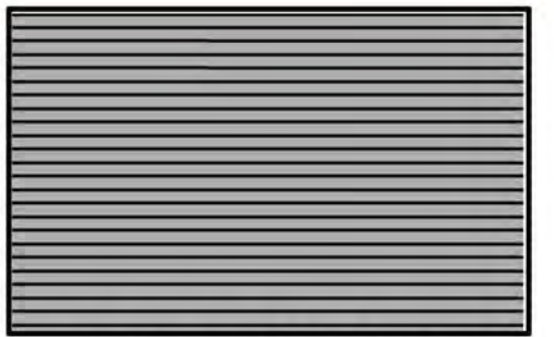
EAST-SOUTHEAST NON DRIVE THRU SIDE ELEVATION



WEST-NORTHWEST DRIVE THRU SIDE ELEVATION



EST EXISTING STONE
COLOR: LIMESTONE



CMP CORRUGATED METAL PANEL
MANUFACTURER: METAL ERA
COLOR: CITY SCAPE



T-1 TILE
MANUFACTURER: IRIS CERAMICA
COLOR: OAK



ST-1 STUCCO
PAINT MANUFACTURER: BENJAMIN MOORE
COLOR: HC-85 FAIRVIEW TAUPE



TR1 ALUMINUM TRELLIS
COLOR: CITY SCAPE



T2 ALUMINUM TRELLIS
COLOR: CHARCOAL GREY W/ GOLD
UNDERSCORE

F ALUMINUM FASCIA
COLOR: CITY SCAPE

EXTERIOR LIGHTING LEDGEND

F12T	6" LED DOWN LIGHT	SEE EXTERIOR LIGHTING ATTACHMENT A
S1H	DOWN ONLY RADIAL WALL SCONCE	SEE EXTERIOR LIGHTING ATTACHMENT B
LED8D	DOWN ONLY ACCENT LIGHTING	SEE EXTERIOR LIGHTING ATTACHMENT C
LED4D	DOWN ONLY ACCENT LIGHTING	SEE EXTERIOR LIGHTING ATTACHMENT D

GLAZING REQUIREMENTS: ELEVATION	ALLOWANCE	AREA	ACTUAL %
SOUTH-SOUTHWEST (FRONT)	30%	146/822	18%
NORTH-NORTHEAST (REAR)	30%	0	0%
EAST-SOUTHEAST (NON DRIVE THRU)	30%	382/2272	17%
WEST-NORTHWEST (DRIVE THRU SIDE)	30%	177/2207	8%

SOUTH-SOUTHWEST FRONT ELEVATION:
WILL BE COMPLETELY NEW SINCE WE ARE ADDING ONTO THE FRONT OF THE BUILDING AND ELIMINATING THE OUTDOOR PLAY AREA. SEE THE SITE PLAN SHOWING THE EXTENT OF THE BUILDING ADDITION.

NORTH-NORTHEAST REAR ELEVATION:
WE WILL BE REMOVING THE MANSARD ROOF OVERHANG AND CONVERTING TO A CORRUGATED METAL AND STUCCO PARAPET WALL. ADDITIONALLY, WE ARE ADDING A BRAND WALL WITH OAK COLOR TILE TO COMPLY WITH THE MATERIALS AND VERTICAL ARTICULATION STANDARDS.

EAST-SOUTHEAST NON DRIVE THRU SIDE ELEVATION:
WE WILL BE REMOVING THE MANSARD ROOF OVERHANG AND CONVERTING TO A CORRUGATED METAL AND STUCCO PARAPET WALL. ADDITIONALLY, WE ARE ADDING AN ARCADE WALL AT THE MAIN ENTRANCE WITH OAK COLOR TILE TO COMPLY WITH THE MATERIALS AND VERTICAL ARTICULATION STANDARDS.

WEST-NORTHWEST DRIVE THRU SIDE ELEVATION:
WE WILL BE REMOVING THE MANSARD ROOF OVERHANG AND CONVERTING TO A CORRUGATED METAL AND STUCCO PARAPET WALL. ADDITIONALLY, WE ARE ADDING ARCADE WALL SURROUNDS AT THE DRIVE THRU WINDOWS WITH OAK COLOR TILE TO COMPLY WITH THE MATERIALS AND VERTICAL ARTICULATION STANDARDS.

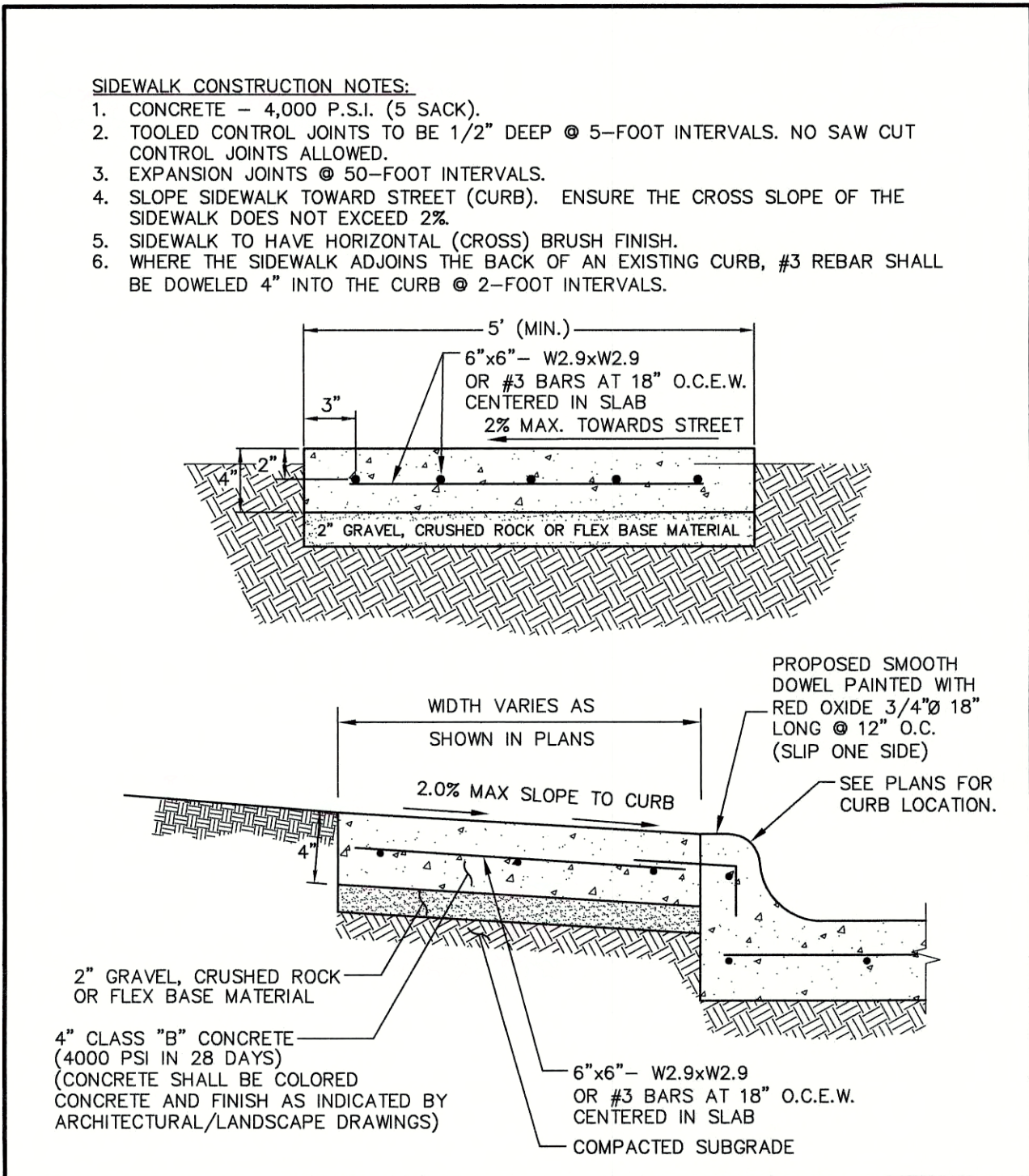
*ALL EXISTING STONE WILL TO REMAIN AND WE WILL WILL BE ADDING CANOPIES, TRELLISES AND FASCIA AT THE LOCATIONS NOTED ON THE ELEVATIONS.

NOTE:
SIGNAGE IS FOR ILLUSTRATION PURPOSE ONLY. SIGNAGE IS NOT PART OF THIS APPLICATION. A SEPARATE SIGNAGE APPLICATION AND PERMIT WILL BE REQUIRED.

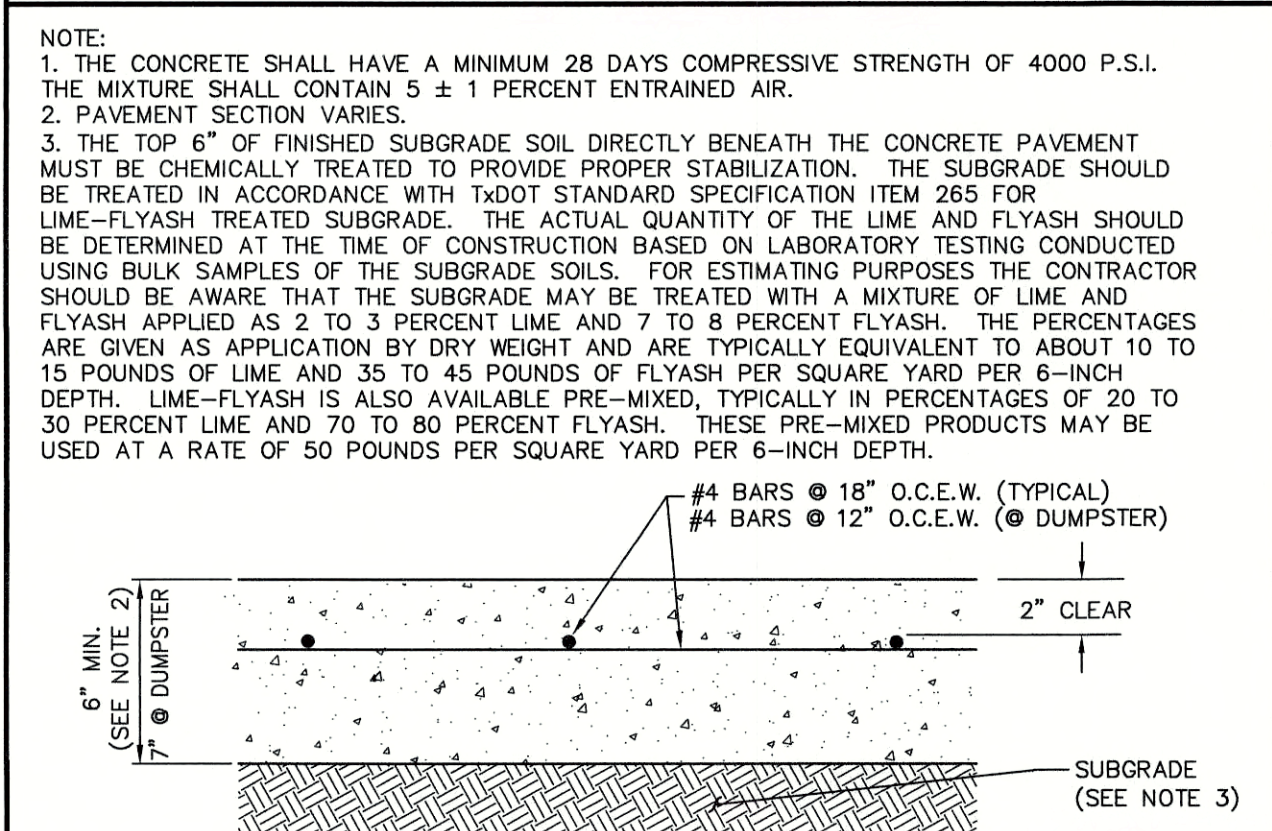
A2.0 EXTERIOR ELEVATION RENDERING

Castles Design Group
McDONALD'S RESTAURANTS
RENOVATION
12514 HIGHWAY 71,
BEECAVE, TX

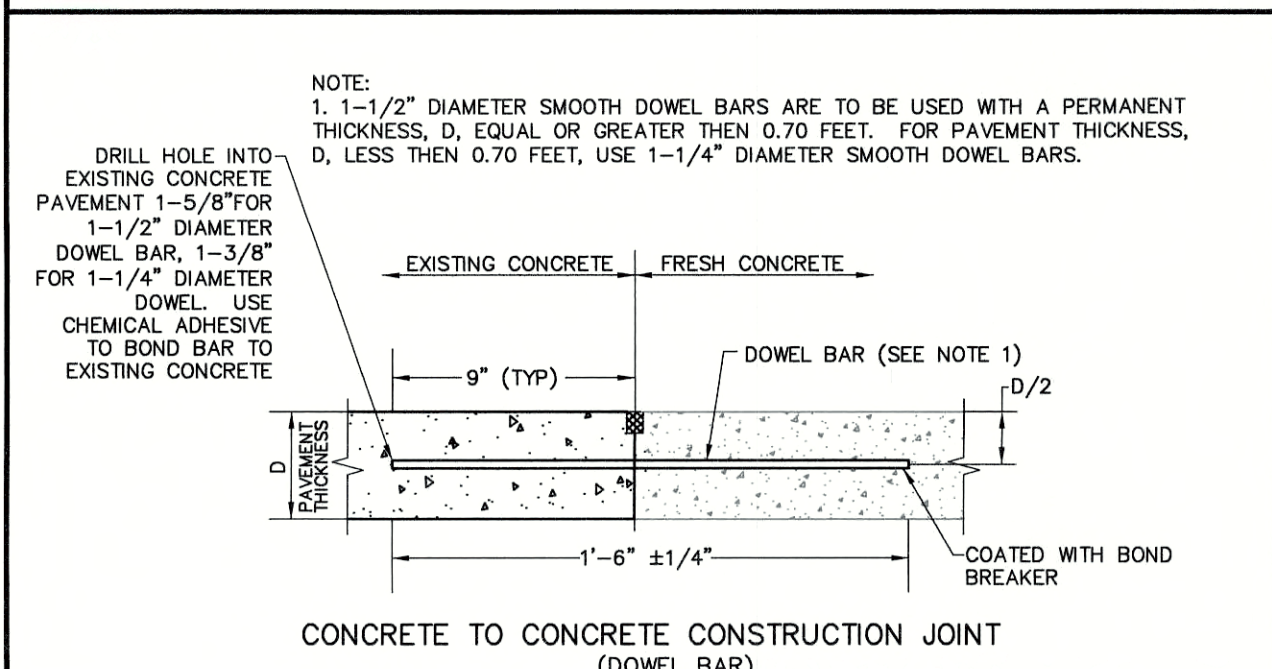
Date: Nov 20, 2017, 12:43pm User ID: Altardy
File: K:\Projects\1404\55\00\2-0 Design\2-1 Civil\01-00-Site Plan.dwg



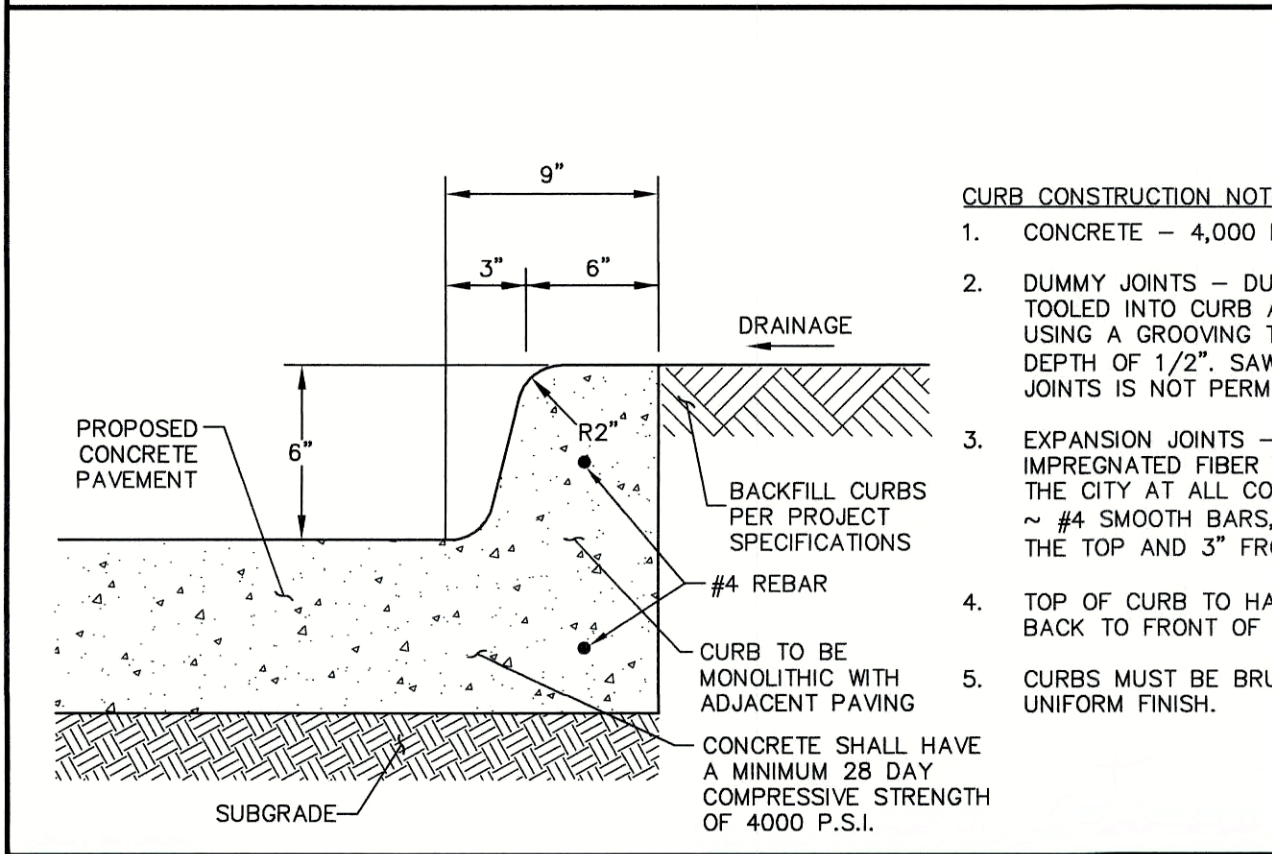
TYPICAL SIDEWALK DETAIL **N.T.S.**



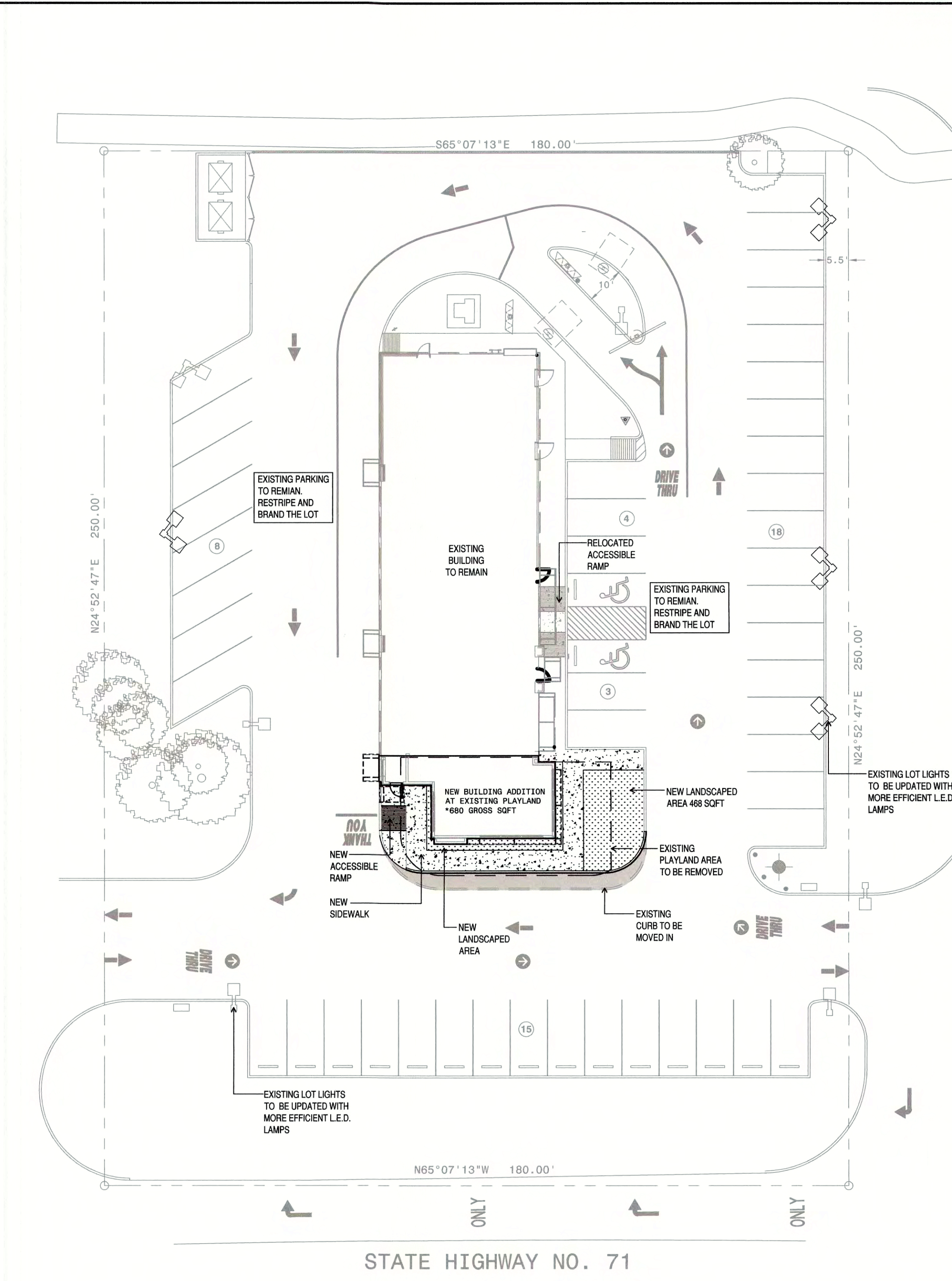
CONCRETE PAVEMENT DETAIL **N.T.S.**



DOWEL BAR FOR PAVEMENT JUNCTURE DETAIL **N.T.S.**

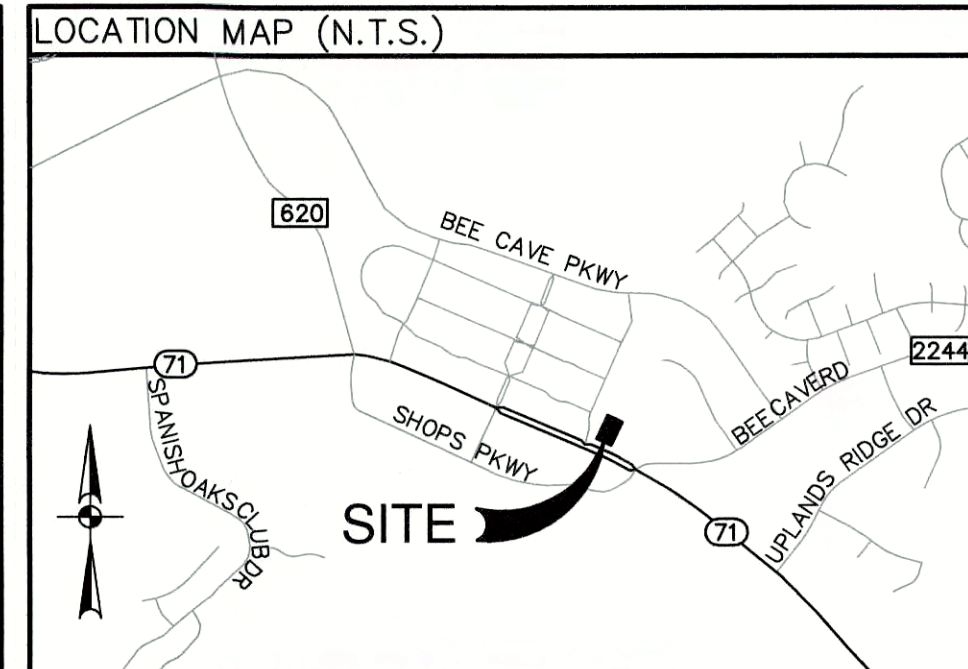
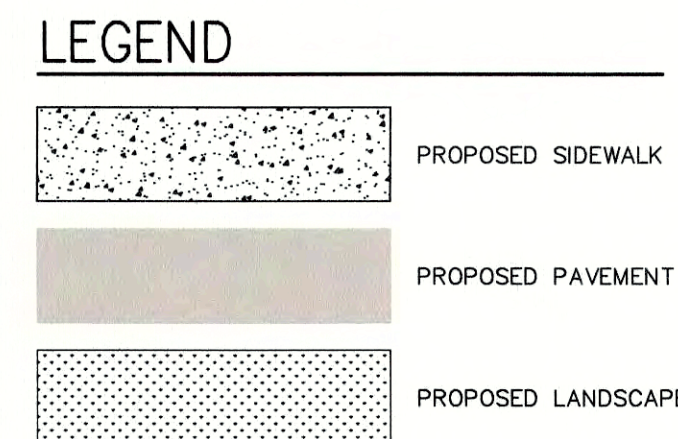


CURB ON CONCRETE PAVEMENT DETAIL **N.T.S.**



IMPERVIOUS SUMMARY TABLE		
DESCRIPTION	EXISTING	PROPOSED
BUILDING	3,712 SF	4,388 SF
PARKING LOT	27,124 SF	27,284 SF
SIDEWALK	2,576 SF	1,502 SF
TOTAL	33,412 SF	33,174 SF

DUE TO THE PROPOSED EXTERIOR MODIFICATIONS, THE IMPERVIOUS COVER ON THE OVERALL SITE HAS BEEN **REDUCED** BY 238 SQ. FT.



GENERAL NOTES

1. CONTRACTOR SHALL BE RESPONSIBLE FOR ACQUIRING ALL NECESSARY PERMITS BEFORE BEGINNING CONSTRUCTION.
2. ALL DIMENSIONS ARE TO FACE OF CURB TO CENTER OF PAINT STRIPING, OR PERPENDICULAR TO THE PROPERTY LINE. ALL RADII ARE TO BACK OF CURB.
3. ALL CURB RADII ARE 3', UNLESS OTHERWISE NOTED.
4. COORDINATE CONTROL FOR PARKING DRIVES, DRIVEWAYS, AND ISLANDS AS SHOWN. NO OFFSETS FROM FACE OF CURB OR BUILDINGS ARE GIVEN.
5. CONTRACTOR SHALL IMMEDIATELY NOTIFY THE ENGINEER OF ANY QUESTIONS THAT MAY ARISE CONCERNING THE INTENT, PLACEMENT, OR LIMITS OF DIMENSIONS NECESSARY FOR CONSTRUCTION OF THE PROJECT.
6. CONTRACTOR SHALL BE RESPONSIBLE FOR RESTORING TO ITS ORIGINAL OR BETTER CONDITION ANY DAMAGE DONE TO EXISTING UTILITIES, FENCES, PAVEMENT, CURBS, DRIVEWAYS, SIDEWALKS, OR SIGNS.
7. CONTRACTOR SHALL PRESERVE ALL PROPERTY CORNER PINS/RODS, CONTROL POINTS, & BENCHMARKS. IF ANY ARE DESTROYED OR REMOVED BY THE CONTRACTOR OR HIS EMPLOYEES, THEY SHALL BE REPLACED AT THE CONTRACTOR'S EXPENSE.
8. ALL CURBS ARE 6" HIGH, UNLESS OTHERWISE NOTED.
9. ALL MATERIALS AND CONSTRUCTION PROCEDURES WITHIN THE SCOPE OF THIS CONTRACT WHERE NOT SPECIFICALLY COVERED IN THE PROJECT SPECIFICATIONS SHALL CONFORM TO ALL APPLICABLE SPECIFICATIONS FOR SIMILAR CONSTRUCTION IN THIS JURISDICTION.
10. THE CONTRACTOR SHALL VERIFY THE EXACT LOCATION OF EXISTING UTILITIES PRIOR TO CONSTRUCTION. ANY UTILITIES, WHETHER SHOWN ON THE PLANS OR NOT, DAMAGED BY THE CONTRACTOR SHALL BE REPAIRED AT THE CONTRACTOR'S EXPENSE.
11. THE CONTRACTOR SHALL BE RESPONSIBLE FOR ALL CONSTRUCTION STAKING.
12. DIMENSIONAL CONTROL POINTS ARE PROVIDED AS NEEDED. ADDITIONAL POINTS MAY BE AVAILABLE UPON REQUEST.
13. THE SBS CONFIGURATION WAS CREATED WITHOUT THE USE OF TOPOGRAPHY. CONTRACTOR SHALL NOTIFY ENGINEER PRIOR TO CONSTRUCTION IF THE PROPOSED SBS EFFECTS EXISTING DRAINAGE PATTERNS. CONTRACTOR IS TO GRADE THE PROPOSED IMPROVEMENTS TO MAINTAIN POSITIVE DRAINAGE AND ENSURE NO PONDING OCCURS.
14. **NOTE:** IT IS THE CONTRACTORS RESPONSIBILITY TO ENSURE THAT ALL GRADES ON SITE MEET THE ADA AND TAS STANDARDS WHICH INCLUDE BUT MAY NOT BE LIMITED TO:
 - SIDEWALKS AND ACCESSIBLE ROUTES TO BE AT 2% MAX CROSS SLOPE AND 5% MAX LONGITUDINAL SLOPE
 - ACCESSIBLE PARKING SPACES SHALL NOT EXCEED 2% SLOPE IN ANY DIRECTION
 - CURB RAMPS SHALL NOT EXCEED 6" IN VERTICAL DIFFERENCE AND SLOPE SHALL BE NO MORE THAN 12:1

BENCHMARK

BENCHMARK 200: CUT SQUARE ON CURB
ELEV: 927.07' NAVD88 (GEIOD03)
BENCHMARK INFORMATION BASED ON AN AS-BUILT/ALTA SURVEY PROVIDED BY PAPE-DAWSON ENGINEERS, DATED APRIL 2017. CONTRACTOR TO ASSUME ALL REMAINING GRADES ARE RELATIVE TO EXISTING FEATURES THAT ARE TO REMAIN

EXISTING IMPROVEMENTS DELINEATED HEREON WERE CALCULATED FROM INFORMATION PROVIDED BY OWNER AND AN AS-BUILT/ALTA SURVEY PROVIDED BY PAPE-DAWSON ENGINEERS, DATED APRIL 2017. CONTRACTOR SHALL NOTIFY ENGINEER IMMEDIATELY OF ANY DISCREPANCIES.

LEGAL DESCRIPTION

LOT 1 OF THE VILLAGE AT BEE CAVE, PHASE ONE, TRAVIS COUNTY, TEXAS VOLUME 100, PAGE 268, 1.033 ACRES

OVERALL SITE PLAN

TYPE	SIZE	LEGEND	LOCATION
SANITARY SEWER	-	-	-
WATER	-	-	-
ELECTRIC (UGND)	-	-	-
GAS	-	-	-

PARKING INFORMATION

TOTAL SPACES	--	--
48	--	--
--	--	--
--	--	--



PLAN SCALE: 1" = 20'

STREET ADDRESS
12514 HWY 71

CITY **BEE CAVE** STATE **TEXAS**

COUNTY **TRAVIS**

REGIONAL DRAWING NO. **42-1642** JOB NO. **40455-00**

DRAWING TITLE **C1.00-Site Plan.dwg**

BY	ISSUE	REV	DATE	DESCRIPTION	CITY COMMENTS
NCB			11-20-2017		



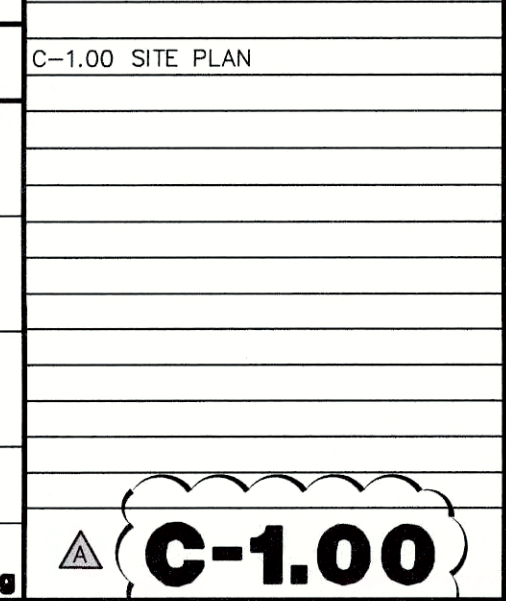
PAPE-DAWSON ENGINEERS

McDonald's
HOUSTON REGION
3707 FM 1980 WEST, SUITE 300, HOUSTON, TEXAS 77068

PLAN APPROVALS	CO-SIGN SIGNATURES
SIGNATURE (2 REQUIRED)	
REGIONAL MANAGER	
REG. CONSTRUCTION MGR	
OPERATIONS MANAGER	
REAL ESTATE MANAGER	
CONTRACTOR	
OWNER	

STATUS	DATE	BY
PRELIMINARY		
PLAN DRAWN		
PLAN CHECKED		

SHEET INDEX
C-1.00 SITE PLAN



C-1.00

REMODEL

PLANT LEGEND

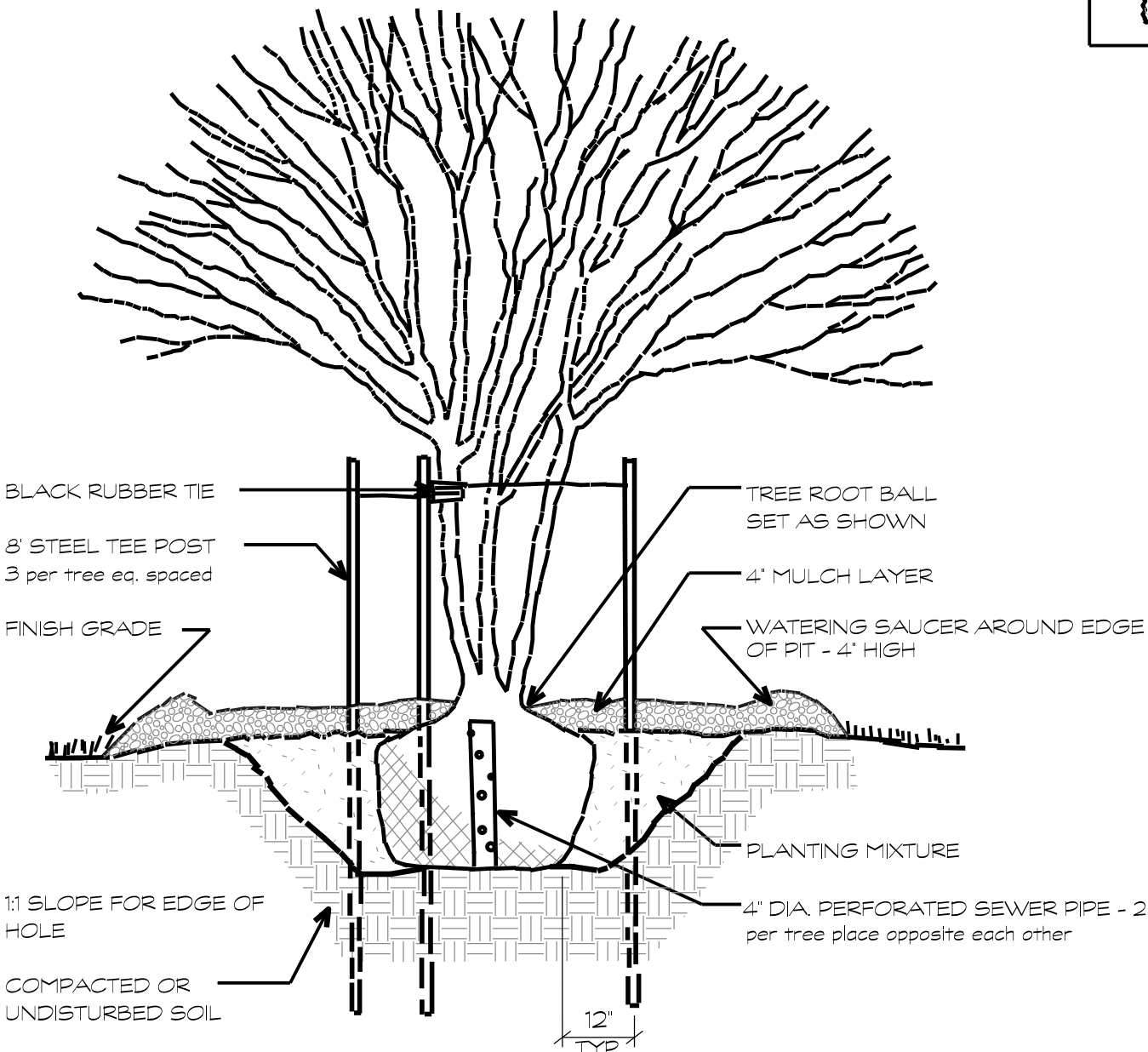
	EXISTING PRESERVED TREES
	SHRUBS/GROUNDCOVERS

PLANT LIST

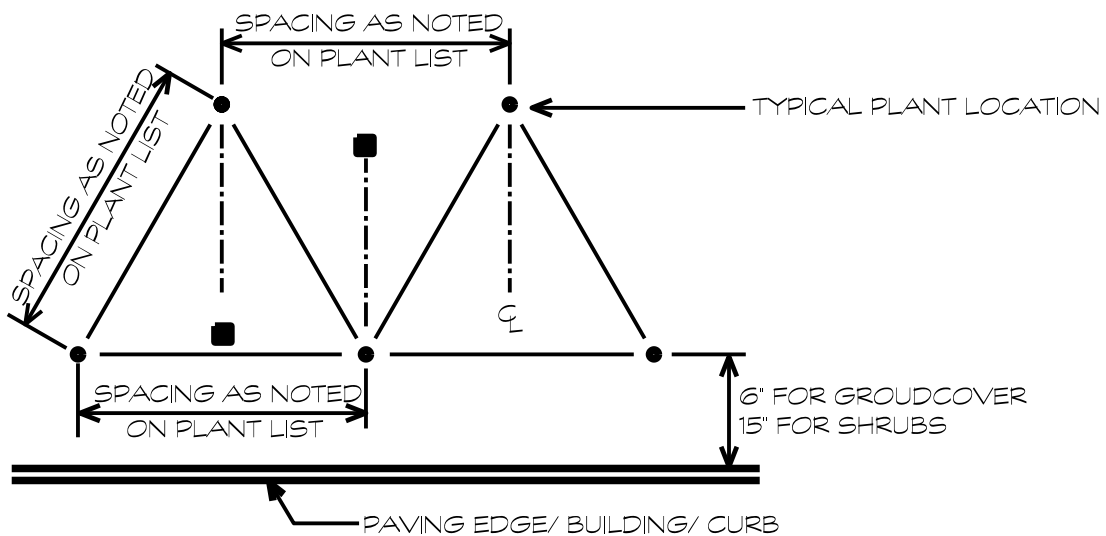
	BOTANICAL NAME/ COMMON NAME	CAL	HEIGHT	SPREAD	MIN. ROOT	REMARKS
TREES						
GM	LAGERSTROEMIA INDICA GRAPE MYRTLE		11/2'-2'	10' x 11'	5' x 8'	30 GAL. MATCHED, WELL ROOTED
SHRUBS						
IH	RAPHIOLEPIS INDICA CLARA CLARA INDIAN HAWTHORN		18'	14'	5 GAL.	FULL WELL ROOTED 30" O.C.
GROUNDCOVER						
BF	DIETES VEGETA BUTTERFLY IRIS		16'	10'	3 GAL.	FULL WELL ROOTED 18" O.C.
RF	ASPARAGUS MEYERI FOXTAIL FERN		12'	12'	3 GAL.	FULL WELL ROOTED 18" O.C.

GENERAL NOTES

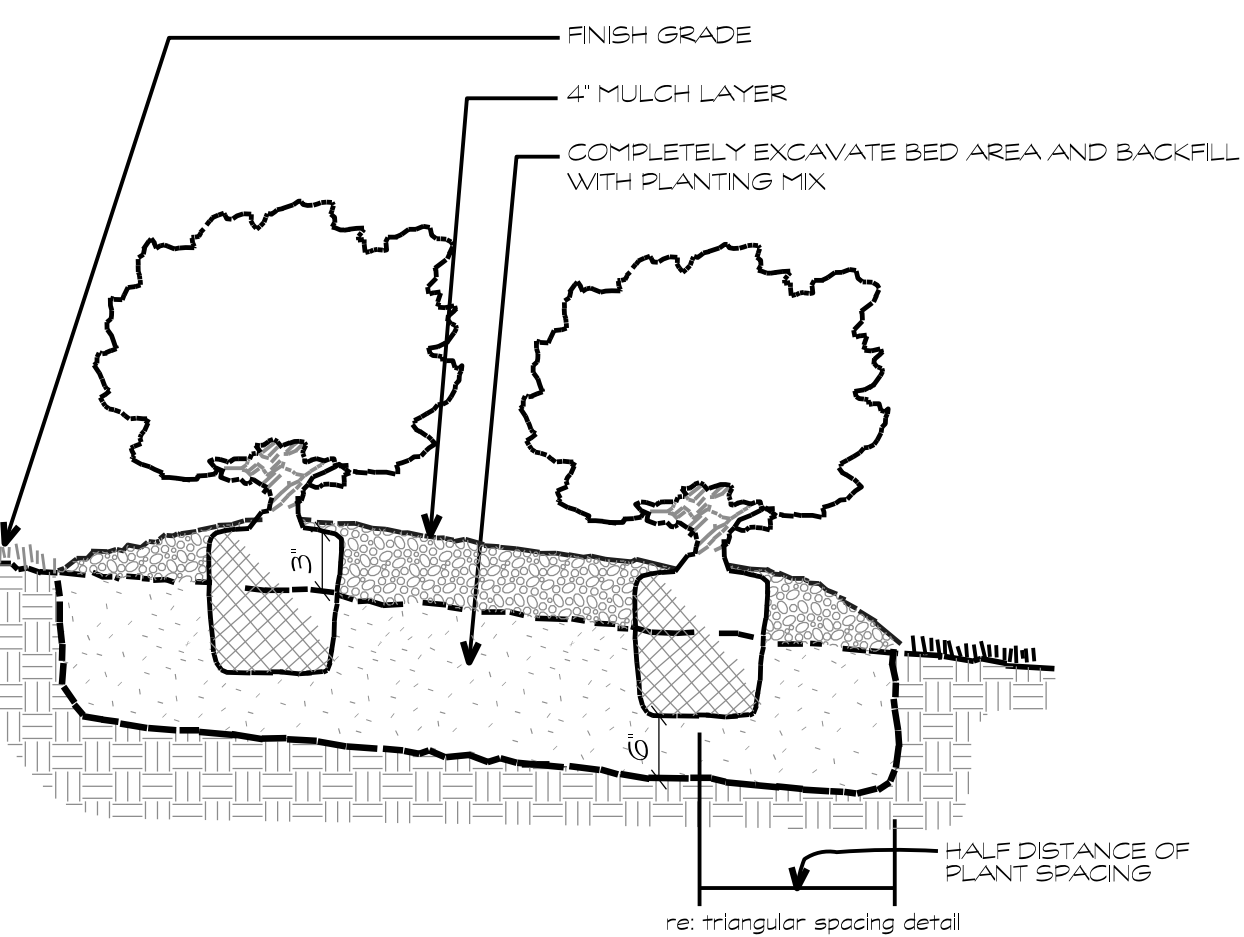
- Planting soil mixture shall be one of the following:
Landscape Mix
Premium Bed Mix by The Ground Up. Contact or 832-247-2574
or
Ultra Soil by Living Earth Technology Group. Contact at 713-466-7360 or 281-342-6113
- Bidding contractors be advised that all new tree material is to be container-grown corresponding to stated root ball sizes as recognized by industry standards. This shall exclude all B&B, machine moved, or trans-planted trees from the bidding process unless otherwise indicated on the plan. The installation contractor shall be prepared to provide photographs of intended plant material along with signed clarification that plant material meets these requirements and that no variations or substitutions have been made.
- The Landscape Contractor doing the installation of this work shall submit to Kudela & Weinheimer information regarding sourcing of plant material. All plant material must be container grown and approved at the source of growth by Kudela & Weinheimer. Tree material meeting the specifications will be tagged with a serialized locking tag at the nursery by Kudela & Weinheimer. Plants arriving at the job site without these tags will be categorically rejected at contractor's expense.
- If the planting plan does not agree with the plant list the quantities indicated graphically on the planting plan shall govern.
- Contractor is responsible for the grading of parking lot islands and setbacks. Grade changes shall range from 8" to 15" above the curb depending on the size of the island. Select topsoil shall be used for these berms. See Parking Island Tree Detail.
- All disturbed areas are to receive four inches of topsoil, mulch, sod or hydromulch (depending on the area), and watered until a healthy stand of grass is established.
- All trees planted adjacent to accessible routes and accessible areas shall not have limbs below 8'0" AFF.



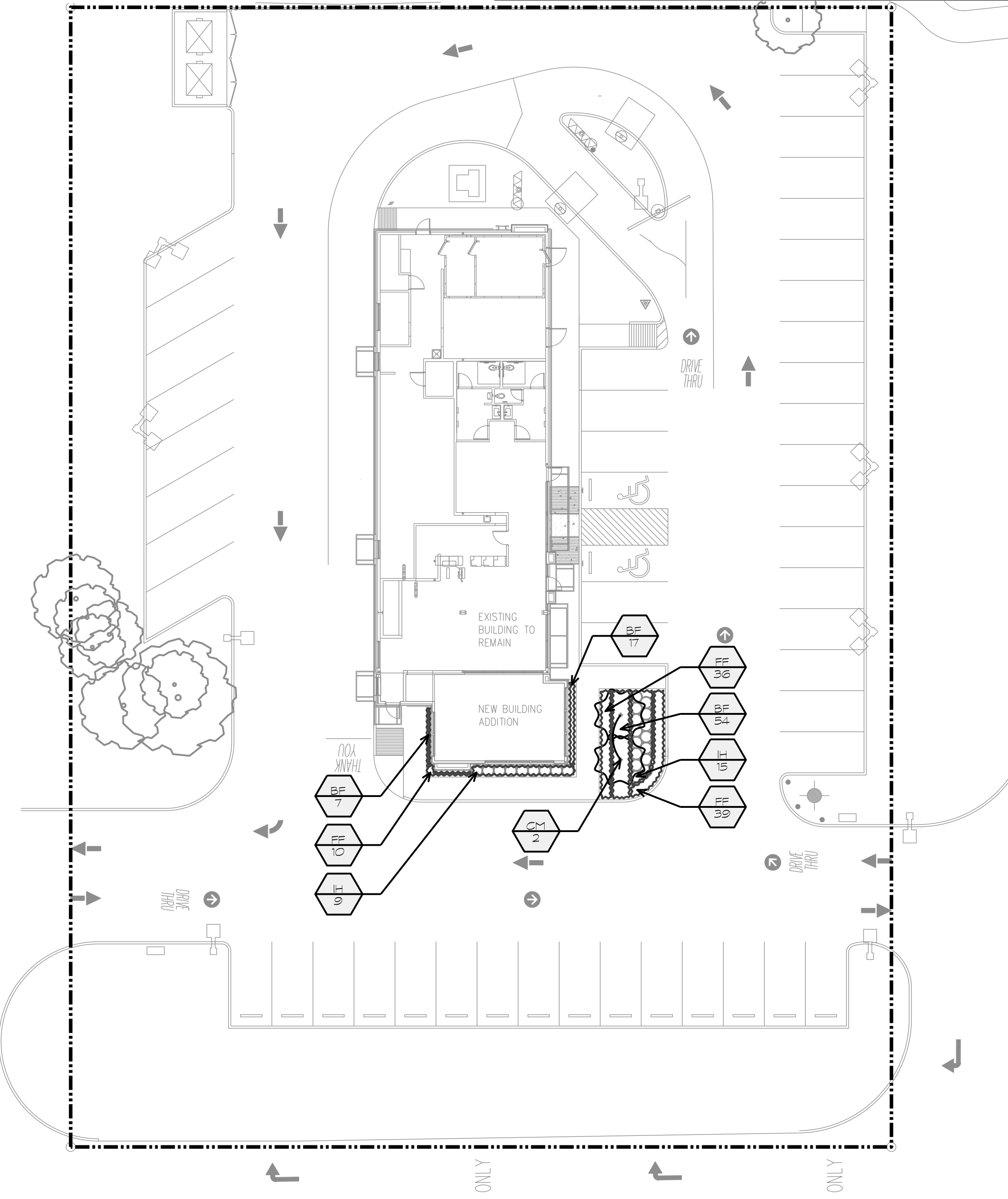
3 MULTI-TRUNK TREE PLANTING DETAIL
NOT TO SCALE



2 TRIANGULAR SPACING DIAGRAM
NOT TO SCALE

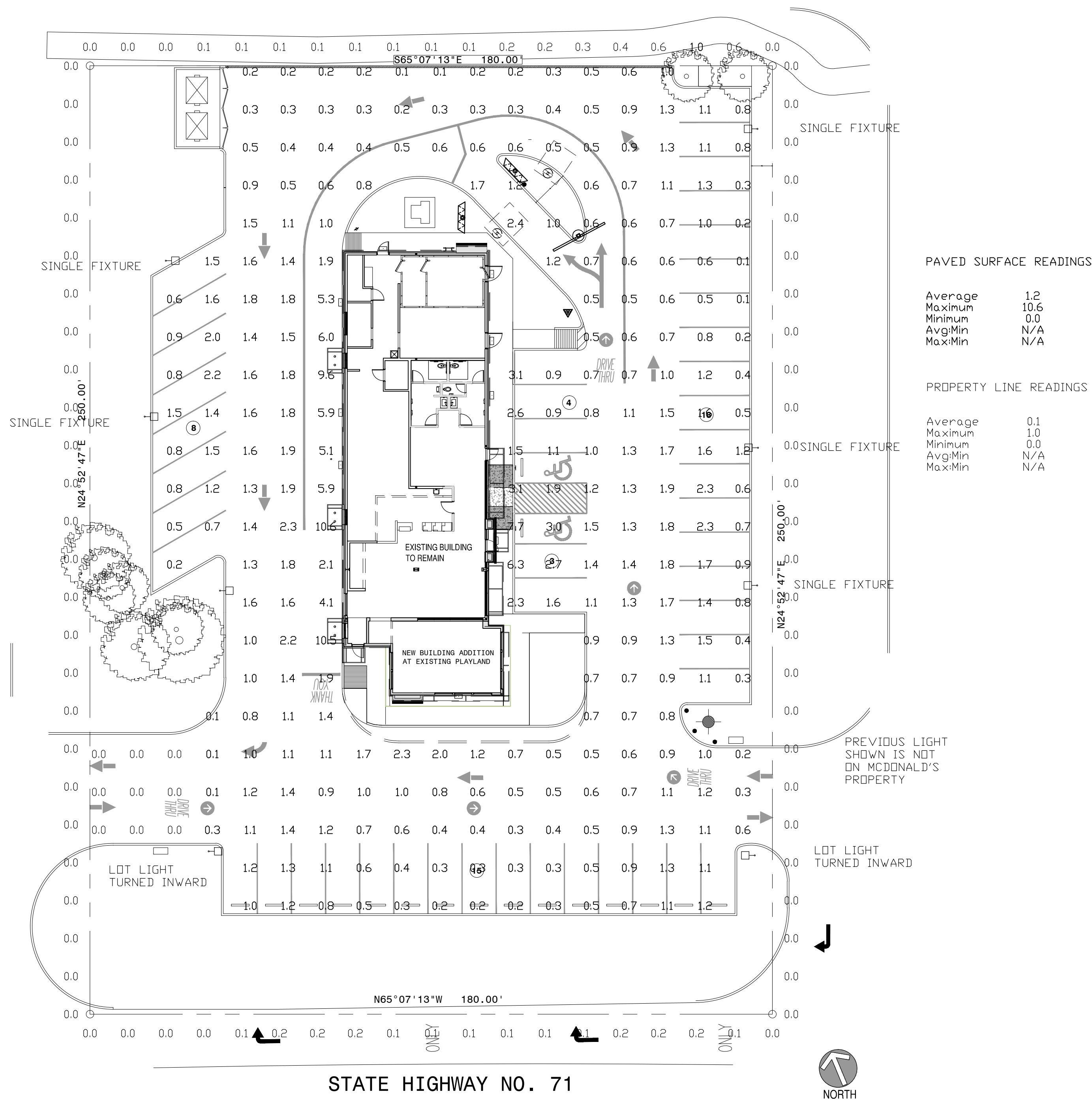


1 SHRUB/ GROUNDCOVER PLANTING
NOT TO SCALE



NOTES:

1. THE FOOTCANDLE LEVELS AS SHOWN ARE BASED ON THE FOLLOWING CRITERIA. ANY SUBSTITUTIONS IN SPECIFIED FIXTURES OR CHANGES TO LAYOUT WILL AFFECT LIGHTING LEVELS SHOWN AND WILL NOT BE THE RESPONSIBILITY OF SECURITY LIGHTING.
2. THE CONTRIBUTION OF THE SOFFIT / BUILDING LIGHTING IS NOT REFLECTED ON THE DRAWING UNLESS SOFFIT / BUILDING LIGHTING IS SPECIFIED IN THE FIXTURE SCHEDULE BELOW.
3. DISTANCE BETWEEN READINGS 10'
4. FINAL ADJUSTMENTS TO AIMING ANGLE/DIRECTION OF FIXTURES MAY BE REQUIRED TO ELIMINATE LIGHT TRESPASS OR GLARE ONTO ADJOINING PROPERTIES OR ROADWAYS.



- SPECIFY COLOR

FIXTURE TYPE	SYMBOL	FIXTURE QUANTITY	CONFIG	QUANTITY	EPA	MOUNTING HEIGHT	LLF	POLE TYPE	QUANTITY	WIND LOAD	ALLOWED EPA
VP-S-24NB-55-5K-T4-UNV-PK2-##-BLC	+	8	SGL	8	0.67	20'	0.87	EXISTING	8		
LB6LEDA10L50K WH / IBXSOL	o	6				9'	0.87				
RWSC-36L-5K-DD-U-PS	□	9				9'	0.87				
HIRAF-HE-LED-48-DD-U-PS	—	7				18'	0.87				

THIS LAYOUT MAY NOT MEET TITLE 24 OR LOCAL ENERGY REQUIREMENTS. IF THIS LAYOUT NEEDS TO BE TITLE 24 COMPLIANT OR MEET OTHER ENERGY REQUIREMENTS, PLEASE CONSULT FACTORY WITH SPECIFIC DETAILS REGARDING PROJECT REQUIREMENTS SO THAT REVISIONS MAY BE MADE TO THE DRAWING.

THIS LIGHTING PATTERN REPRESENTS ILLUMINATION LEVELS CALCULATED FROM LABORATORY DATA TAKEN UNDER CONTROLLED CONDITIONS IN ACCORDANCE WITH ILLUMINATING ENGINEERING SOCIETY APPROVED METHODS. ACTUAL PERFORMANCE OF ANY MANUFACTURER'S LUMINAIRES MAY VARY DUE TO VARIATION IN ELECTRICAL VOLTAGE, TOLERANCE IN LAMPS, AND OTHER VARIABLE FIELD CONDITIONS.

REVISIONS

UNLESS OTHERWISE SPECIFIED, ALL DIMENSIONS ARE IN INCHES

NOTES:

SCALE	DATE	NEXT ASSEMBLY	REF. DRWS.
1" = 20' 0"	12/7/17		
DRAWN BY	MW		
CHECKED BY			
APPROVED BY			
APPROVED BY		FINISH	
APPROVED BY			
SHOP ORDER		MATERIAL	
PROJECT NO.			



2100 Gulf Road, Suite #60, Rolling Meadows, IL 60008
1-800-244-6868

POINT-BY-POINT FOOTCANDLE PLOT FOR
- McDONALD'S -
12514 HWY 71
BEE CAVE, TX

DRAWING NUMBER
1PCP37599B



VIPER L SERIES

Enhanced Large Viper Luminaire

Intended Use:

The Beacon Viper luminaire is available in two sizes with a wide choice of different LED Wattage configurations and optical distributions designed to replace HID lighting up to 1000W MH or HPS. Luminaires are suitable for wet locations.

Construction:

- One piece optical cartridge system consisting of an LED engine, LED lamps, optics, gasket and stainless steel bezel.
- Cartridge is held together with internal brass standoffs soldered to the board so that it can be field replaced as a one piece optical system.
- Two-piece silicone and micro-cellular polyurethane foam gasket ensures a weather-proof seal around each individual LED.

LED/Optics:

- LED driver accepts 100V through 277V, 50 Hz to 60 Hz (UNV), or a driver that accepts 347V or 480V input.
- Power factor is .92 at full load.
- All electrical components are rated at 50,000 hours at full load and 25°C ambient conditions per MIL- 217F Notice 2.
- Dimming drivers are standard with connections for external dimming equipment available upon request.
- Component-to-component wiring within the luminaire may carry no more than 80% of rated load and is listed by UL for use at 600VAC at 50°C or higher.
- Plug disconnects are listed by UL for use at 600 VAC, 13A or higher. 13A rating applies to primary (AC) side only.

Electrical:

- Fixture electrical compartment shall contain all LED driver components and shall be provided with a push-button terminal block for AC power connections.
- Ambient operating temperature -40°C to 40°C
- Optional 7-pin ANSI C136.41-2013 twist-lock photo control receptacle available. Compatible with ANSI C136.41 external wireless control devices.
- Surge protection - 20KA; Shuts off at end of life.
- Lifeshield™ Circuit - protects luminaire from excessive temperature. The device shall activate at a specific, factory-preset temperature, and progressively reduce power over a finite temperature range. A luminaire equipped with the device may be reliably operated in any ambient temperature up to 55°C (131°F). Operation shall be smooth and undetectable to the eye. Thermal circuit is designed to "fail on", allowing the luminaire to revert to full power in the event of an interruption of its power supply, or faulty wiring connection to the drivers. The device shall be able to co-exist with other 0-10V control devices (occupancy sensors, external dimmers, etc.).

Controls/Options:

- Available with an optional passive infrared (PIR) motion sensor capable of detecting motion 360° around the luminaire. When no motion is detected for the specified time, the Motion Response system reduces the Wattage to factory preset level, reducing the light level accordingly. When motion is detected by the PIR sensor, the luminaire returns to full Wattage and full light output. Please contact Beacon Products if project requirements vary from standard configuration.
- Available with Energeni for optional set dimming, timed dimming with simple delay, or timed dimming based on hours of operation or time of night (see www.beaconproducts.com/products/energeni).
- Also available with **Beaconnect** Wireless Control System (see **Beaconnect** product page for more details www.beaconproducts.com/products/beaconnect).

Installation:

- Mounting options for horizontal arm, vertical tenon or traditional arm mounting available. Mounting hardware included.

Finish:

- Beacote V polyester powder-coat electrostatically applied and thermocured.
- Beacote V finish consists of a five stage pretreatment regimen with a polymer primer sealer and top coated with a thermoset super TGIC polyester powder coat finish.
- The finish meets the AAMA 605.2 performance specification which includes passing a 3000 hour salt spray test for corrosion resistance and resists cracking or loss of adhesion per ASTM D522 and resists surface impacts of up to 160 inch-pounds.

Listings:

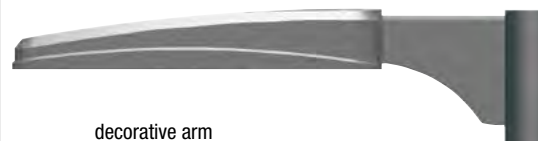
- DesignLights Consortium (DLC) qualified, consult DLC website for more details: <http://www.designlights.org/QPL>
- Listed to UL1598 and CSA22.2#250.0-24 for wet locations and 40°C ambient temperatures
- 3G rated for ANSI C136.31 high vibration applications
- IDA approved

Warranty:

Five year limited warranty (for more information visit: www.hubbellighting.com/resources/warranty).

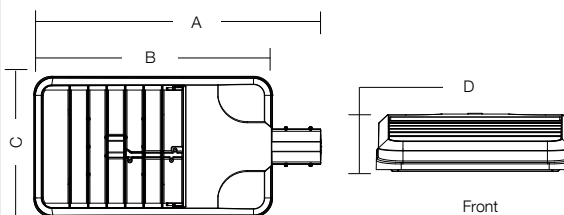


rectangular arm



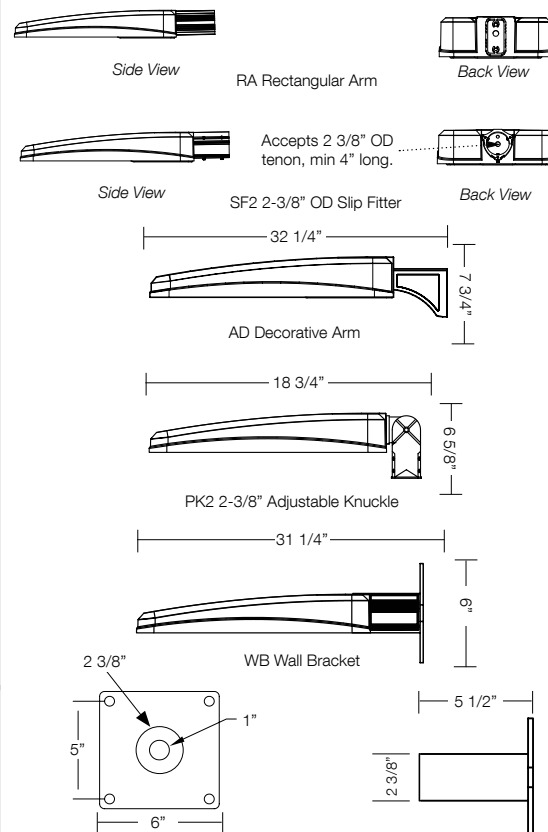
decorative arm

DIMENSIONS



A	B	C	D	Weight:	EPA
29.12"	24.19"	14.25"	4.13"	25.0 lbs	1.0 ft ²
(704 mm)	(614 mm)	(362 mm)	(105 mm)	(11.3 kg)	

MOUNTING OPTIONS



*3000K and warmer CCTs only

Web: www.securitylighting.com

2100 Golf Road, Suite 460, Rolling Meadows, IL 60008-4704

Phone: 1-800-LIGHT IT, 1-800-544-4848, Fax: 847-279-0642

Copyright ©2016 Security Lighting, a division of Hubbell Lighting, Inc.

All Rights Reserved. • Specifications subject to change without notice. • Printed in U.S.A. • SL0002 07/16



HIRAF LINEAR LED FACADE FIXTURE



The HIRAF Linear Facade Lighting System is a holistic LED lighting solution designed from a clean slate to maximize the lighting effect for marketing your building as your brand while keeping energy usage and maintenance to an absolute minimum. Thanks to its intuitive plug and play mounting design with integral driver system, installation is quick and simple and only requires that power be brought to one fixture in each continuous row. The long life LED source minimizes maintenance to only an occasional cleaning of outer lens surfaces. This system is truly a "set it and forget it" solution only from Security Lighting!



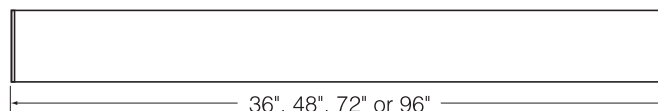
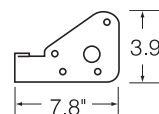
**Full Cut off Fully
Shielded UP/DOWN LED**

Fixture Specifications

FEATURES

- Extruded aluminum construction, finished in weatherproof powder-coat paint
- Tempered glass lenses
- Power feed required only at beginning of each continuous row; subsequent fixtures plug together in series
- Fully integral driver system for completely self-contained lighting system
- Aluminum mounting brackets are finished in powder-coat paint and each order ships with a formed drilling template for ease of installation
- 70 CRI standard
- 5200K color temperature standard. Consult factory for others.
- 50,000 hour long life LED illumination
- Fixtures available in up and down light, down light only or up light only

DIMENSIONS



ORDERING INFORMATION

SAMPLE CATALOG NUMBER

HIRAF

Series

LED

Source

XX

Size

XX

Distribution

XXX

Voltage

PS

Finish

SERIES

HIRAF Linear Façade Fixture

SOURCE

LED LED

SIZE

96 8-Foot
72 6-Foot
48 4-Foot
36 3-Foot

DISTRIBUTION

UD Up and Down Light
DO Down Light Only
UO Up Light Only

VOLTAGE

120 120-Volt
277 277-Volt

FINISH

Standard:

PS = Platinum Silver
WH = White
BL = Black
DB = Dark Bronze

Custom Color: Consult Factory

ACCESSORIES

HIRAFLEDWHIPKIT

Power whip kit (one required per row of fixtures or one per fixture if not mounting continuous row)



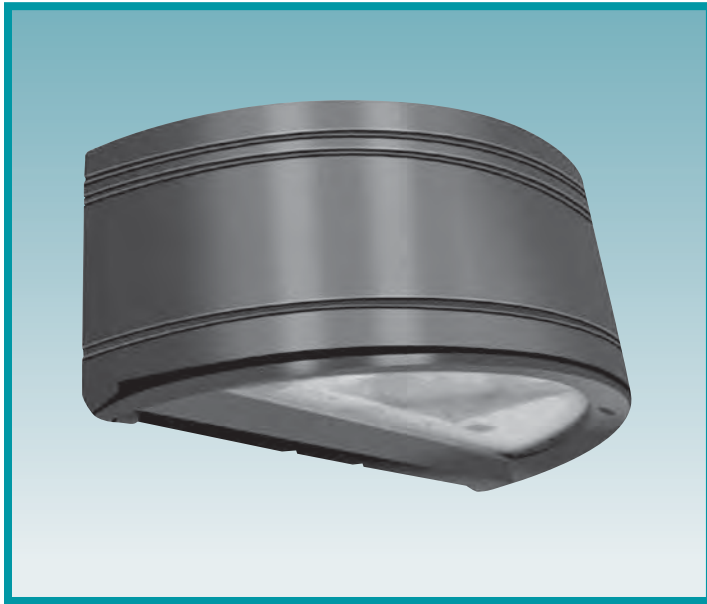
A HUBBELL LIGHTING, INC. COMPANY

Performance Designed Lighting Products

www.securitylighting.com

1085 Johnson Drive • Buffalo Grove, IL 60089 • TOLL-FREE: 800-544-4848 • PHONE: 847-279-0627 • FAX: 847-279-0642

RADIUS WALL SCONCE



The RWSC Series radius wall sconce offers maximum versatility with multiple light sources and finishes. The available combination of uplight/downlight washes the building facade while the radial soft form housing will complement similar architectural design elements.

Full Cut off Fully Shielded DOWN



Fixture Specifications

FEATURES

- Durable cast aluminum housing
- Available in various lighting distributions for maximum versatility
- Integrated design eliminates high angle brightness
- Luminaire finished in weatherproof powder-coat paint
- Completely sealed, flat tempered glass lenses suitable for use in wet location
- Ships complete with lamp
- Downlight only, full cut-off Dark Sky compliant

ORDERING INFORMATION

SAMPLE CATALOG NUMBER

RWSC

Series

XXXXXX

Wattage/Source

XX

Distribution

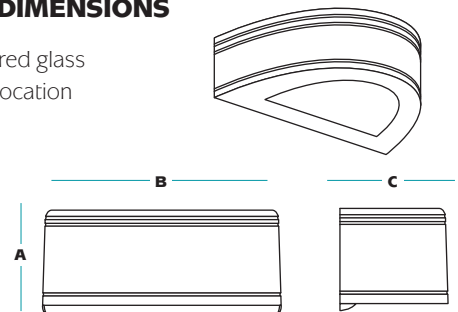
XX

Finish

XXX

Voltage

DIMENSIONS



A	B	C
7.25"	18.0"	9.0"

SERIES	
RWSC	Radius Wall Sconce
WATTAGE/SOURCE ¹	
70PMH	70 watt pulse start metal halide
100PMH	100 watt pulse start metal halide
150PMH	150 watt pulse start metal halide
70HPS	70 watt high pressure sodium
100HPS	100 watt high pressure sodium
150HPS	150 watt high pressure sodium
26QF	26 watt quad tube fluorescent
32TRF	32 watt triple tube fluorescent
42TRF	42 watt triple tube fluorescent
226QF	2x26 watt quad tube fluorescent
232TRF	2x32 watt triple tube fluorescent
242TRF	2x42 watt triple tube fluorescent
30LED	30 watt LED ²

DISTRIBUTION	
UD	Up/Downlight
WD	Downlight only (wide distribution)- standard
FT	Downlight only (forward throw)

FINISH ³	
DB	Dark Bronze
BK	Black
WH	White
PS	Platinum Silver

¹ Consult factory for other lamp wattage and sources.
² Other finishes available. Consult factory.
³ Available with WD distribution only.
⁴ Not for use with LED source.

VOLTAGE	
120	120 volt
277	277 volt
MT	Multi-Tap

OPTIONS	
QSL	Quartz re-strike with lamp
F	Single fusing
FF	Double fusing
EM12⁴	1 MR11/MR16 two pin socket for 12v power (by others) 35w max. 35w MR11 lamp included.
2EM12⁴	2 MR11/MR16 two pin sockets for 12v power (by others) 35w max. 35w MR11 lamp included.

ACCESSORIES	
EM	Remote emergency ballast (fluorescent only)



A HUBBELL LIGHTING, INC. COMPANY

Performance Designed Lighting Products

www.securitylighting.com

1085 Johnson Drive • Buffalo Grove, IL 60089 • TOLL-FREE: 800-544-4848 • PHONE: 847-279-0627 • FAX: 847-279-0642



New and Existing Construction

LB6LEDA10L

LED Downlight Module (1000 Lumens)
12W High Efficacy
Wet Location
120V



DATE: _____ TYPE: _____

FIRM NAME: _____

PROJECT: _____

LiteBox 6"

Aperture: Nominal 6"
See Housing Specification Sheet for ceiling cutout requirements
Not to Scale

APPLICATIONS:

LiteBox LED modules are designed for use in new construction as well as retrofit applications with existing Prescolite or competitive 6" housings using the screw base adapter included. Lumen output and distribution comparable to a 75W PAR while consuming only 12 watts. ENERGY STAR® qualified. Can be used to comply with California Title 24 IECC watts per square foot requirements. Suitable for use with continuous room side ambient temperature up to 25°C. Flicker-free dimming to 15% with most standard dimmers. (See Dimming Notes).

LIGHT ENGINE:

High efficacy LED light engine, 3000K and 3500K, 80+ CRI, integrated with durable aluminum heat sink for excellent thermal management. System designed for optimal life and lumen maintenance (60,000 hours at 70% lumen maintenance per TM-21).

LENS/REFLECTOR:

All LiteBox LED modules are provided standard with a diffuse optical grade acrylic lens for uniform illumination and superior glare control. Reflector powder coat finish creates aesthetic ceiling appearance and visually comfortable 55° cutoff.

LED DRIVER:

Integral high efficiency LED driver 120V, >0.9 power factor, dimmable to 15% with standard incandescent or electronic low voltage dimmers. (See Dimming Notes for recommended dimmers.) Output over-voltage, over-current, and short circuit protection. Life expectancy of 60,000 hours minimum at recommended ambient temperatures.

INSTALLATION:

For New Construction: Use with Prescolite DBX QuickLink LED housings. QuickLink connector mates directly to housing connector without a screw base adapter for California Title 24 compliance.

For Retrofit: Use in Prescolite or other compatible 6" recessed housings using supplied screw base adapter.

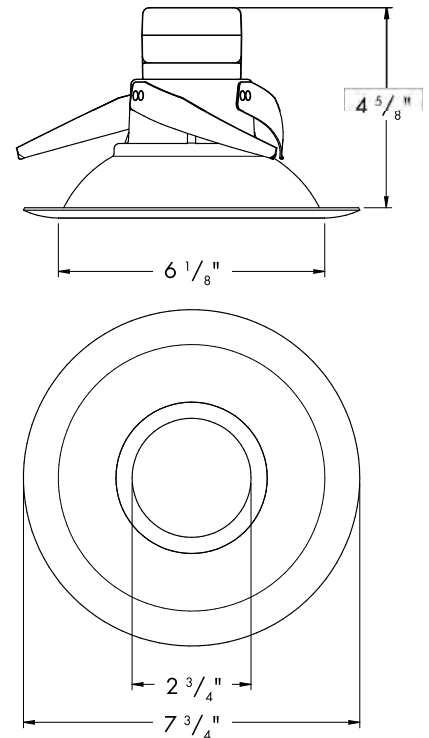
Easy installation with (3) stainless steel spring clips (pre-installed).

CERTIFICATIONS:

UL/cUL Classified for use in Prescolite or other 6" recessed housings including Halo, Juno, and Lithonia. (See page 3 for more details) Suitable for wet locations. ENERGY STAR qualified. Meets California Title 24 with DBXQL

WARRANTY:

5 year warranty
Additional information on page 3
See www.prescolite.com for details.



CATALOG NUMBER

EXAMPLE: LB6LEDA10L30K WH

TRIM	LED COLOR	CRI	TRIM COLOR	ACCESSORIES
<input type="checkbox"/> LB6LEDA10L 6" 1000 Lumen Litebox LED Module with dimming to 15% 120V	<input type="checkbox"/> 30K 3000 Kelvin <input type="checkbox"/> 35K 3500 Kelvin	<input type="checkbox"/> Blank 80+ CRI	<input type="checkbox"/> WH White <input type="checkbox"/> BL Black <input type="checkbox"/> Z Zet <input type="checkbox"/> BZ Bronze	<input type="checkbox"/> LiteGear¹ Inverter, single phase central lighting, 125VA-250VA <input type="checkbox"/> LPS Series¹ LitePower micro-inverter, 20VA-55VA <input type="checkbox"/> DBXQL IC/Non-IC Airtight housing with supply wire quick connects

¹ See Central Inverter compatibility note and web links on page 2.